



# INTERNATIONAL GEMOLOGICAL INSTITUTE

## IGI GEMOLOGICAL REPORT

### IGI LABORATORY GROWN DIAMOND GRADING REPORT

2/28/2018  
IGI Report Number **LG10665104**  
Shape and Cutting Style **ROUND BRILLIANT**

Measurements **4.42 - 4.45 x 2.73 MM.**

### GRADING RESULTS

Carat Weight **0.33 CARAT**  
Color Grade **I**  
Clarity Grade **VS 1**

### ADDITIONAL GRADING INFORMATION

Polish **FAIR**  
Symmetry **VERY GOOD**  
Fluorescence **NONE**  
Inscription(s) **LABORATORY GROWN IGI LG10665104**

### Comments:



The laboratory grown diamond described in this Report ("Report") has been graded, tested, analyzed, examined and/or inscribed by International Gemological Institute (IGI). A laboratory grown diamond is one that has essentially the same chemical, physical and optical properties as a mined diamond, with the exception of being grown by man (a manufactured product). IGI employs and utilizes those techniques and equipment currently available to IGI, including, without limitation, 10X magnification, corrected triplet loupe, binocular microscope, master color composition stones, non-contact-optical measuring device, Diamond Sure™, Diamond View™, Spectrophotometer and such other instruments and/or processes as deemed appropriate by IGI. This Report includes advanced security features. A duly accredited gemologist or jeweler can advise you with respect to the importance of and interrelationship between cut, color, clarity and carat weight. THIS REPORT IS NEITHER A GUARANTEE, VALUATION, NOR APPRAISAL OF THE GEMSTONE DESCRIBED HEREIN. PLEASE REVIEW THE LIMITATIONS AND RESTRICTIONS SET FORTH ONLINE. FOR ADDITIONAL INFORMATION, IMPORTANT LIMITATIONS, IMPORTANT LIMITATIONS AND DISCLAIMERS, PLEASE GO TO WWW.IGIONLINE.COM OR CALL 1-888-BUY-IGI.

© INTERNATIONAL GEMOLOGICAL INSTITUTE, INC.

## IGI IDENTIFICATION REPORT

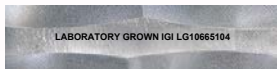
LG10665104

Report verification at [igionline.com](http://igionline.com)

## ADDITIONAL INFORMATION

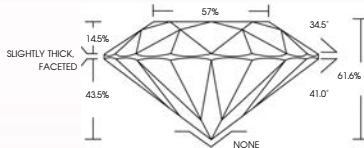


PHOTO ENLARGED



LABORATORY GROWN IGI LG10665104

LASERSCRIBE<sup>SM</sup>



The gemstone described in this identification report ("Report") has been identified, authenticated, graded, tested, analyzed, examined and/or inscribed by International Gemological Institute ("IGI"). IGI employs and utilizes those techniques and equipment currently available to IGI, including, without limitation, 10X magnification, corrected triplet loupe, stereo zoom binocular microscope, refractometer, spectrophotometer, polariscope, non-contact optical measuring device, and such other instruments and/or processes as deemed appropriate by IGI. This Report includes advanced security features. A duly accredited gemologist or jeweler can advise you with respect to the importance of and interrelationship between cut, color, clarity and carat weight. THIS REPORT IS NEITHER A GUARANTEE, VALUATION, NOR APPRAISAL OF THE GEMSTONE DESCRIBED HEREIN. PLEASE REVIEW THE LIMITATIONS AND RESTRICTIONS SET FORTH ONLINE. FOR ADDITIONAL INFORMATION, IMPORTANT LIMITATIONS AND DISCLAIMERS, PLEASE GO TO [WWW.IGIONLINE.COM](http://WWW.IGIONLINE.COM) OR CALL 1-888-BUY-IGI.



[igionline.com/igiveb/online-report](http://igionline.com/igiveb/online-report)



THIS DOCUMENT WAS PRODUCED WITH THE FOLLOWING SECURITY MEASURES: SPECIAL DOCUMENT PAPER, INK SCREENING, WATERMARK BACKGROUND DESIGN, HOLOGRAM AND OTHER SECURITY FEATURES NOT LISTED AND DID EXCEED DOCUMENT SECURITY INDUSTRY GUIDELINES.