



**INTERNATIONAL  
GEMOLOGICAL  
INSTITUTE**

425091489

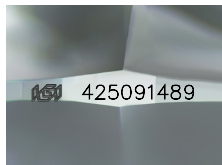


October 13, 2020  
IGI Report Number 425091489  
NATURAL DIAMOND  
ROUND BRILLIANT  
4.27 - 4.29 x 2.67 mm  
Carat Weight 0.30 CARAT  
Color Grade J  
Clarity Grade VVS 2  
Cut Grade EXCELLENT  
Polish EXCELLENT  
Symmetry EXCELLENT  
Fluorescence NONE  
Inscription(s) IGI 425091489  
Comments: IDEAL CUT ROUND BRILLIANT

**DIAMOND REPORT**

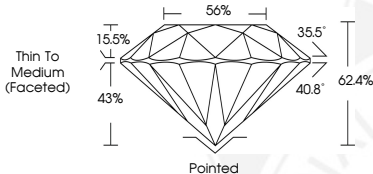
**ELECTRONIC COPY**

October 13, 2020  
IGI Report Number 425091489  
Description NATURAL DIAMOND  
Shape and Cutting Style ROUND BRILLIANT  
Measurements 4.27 - 4.29 x 2.67 mm



**GRADING RESULTS**

Carat Weight 0.30 CARAT  
Color Grade J  
Clarity Grade VVS 2  
Cut Grade EXCELLENT



**ADDITIONAL GRADING INFORMATION**

Polish EXCELLENT  
Symmetry EXCELLENT  
Fluorescence NONE  
Inscription(s) IGI 425091489  
Comments: IDEAL CUT ROUND BRILLIANT

**COLOR**

| D - F     | G - J          | K - M           | N - R            | S - Z       | FANCY |
|-----------|----------------|-----------------|------------------|-------------|-------|
| Colorless | Near Colorless | Slightly Tinted | Very Light Color | Light Color |       |

**CLARITY**

| IF                  | VVS <sup>1-2</sup>          | VS <sup>1-2</sup>      | SI <sup>1-2</sup> | I <sup>1-2</sup> |
|---------------------|-----------------------------|------------------------|-------------------|------------------|
| Internally Flawless | Very Very Slightly Included | Very Slightly Included | Slightly Included | Included         |



October 13, 2020  
IGI Report Number 425091489  
NATURAL DIAMOND  
ROUND BRILLIANT  
4.27 - 4.29 x 2.67 mm  
Carat Weight 0.30 CARAT  
Color Grade J  
Clarity Grade VVS 2  
Cut Grade EXCELLENT  
Polish EXCELLENT  
Symmetry EXCELLENT  
Fluorescence NONE  
Inscription(s) IGI 425091489  
Comments: IDEAL CUT ROUND BRILLIANT

