



492150956

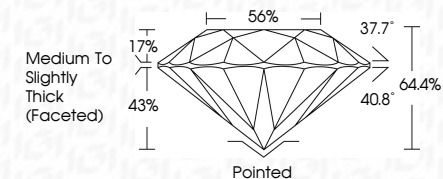
DIAMOND REPORT **ELECTRONIC COPY**



October 26, 2021
IGI Report Number 492150956
Description NATURAL DIAMOND
Shape and Cutting Style ROUND BRILLIANT
Measurements 6.29 - 6.33 x 4.06 mm

GRADING RESULTS

Carat Weight 1.01 CARAT
Color Grade J
Clarity Grade VVS 2
Cut Grade VERY GOOD



October 26, 2021
IGI Report Number 492150956
Description NATURAL DIAMOND
Shape and Cutting Style ROUND BRILLIANT
Measurements 6.29 - 6.33 x 4.06 mm

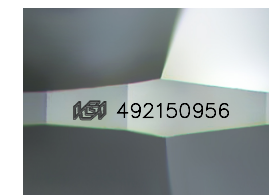
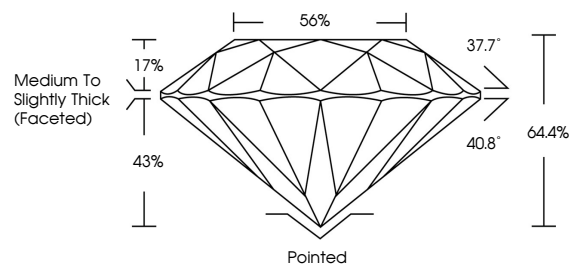
GRADING RESULTS

Carat Weight 1.01 CARAT
Color Grade J
Clarity Grade VVS 2
Cut Grade VERY GOOD

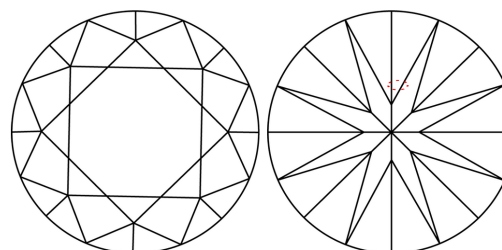
ADDITIONAL GRADING INFORMATION

Polish EXCELLENT
Symmetry EXCELLENT
Fluorescence NONE
Inscription(s) IGI 492150956

PROPORTIONS



CLARITY CHARACTERISTICS



KEY TO SYMBOLS

Red symbols indicate internal characteristics.
Green symbols indicate external characteristics.

COLOR

| D - F | G - J | K - M | N - R | S - Z | FANCY |
|-----------|----------------|-----------------|------------------|-------------|-------|
| Colorless | Near Colorless | Slightly Tinted | Very Light Color | Light Color | |

CLARITY

| IF | VVS ¹⁻² | VS ¹⁻² | SI ¹⁻² | I ¹⁻³ |
|---------------------|-----------------------------|------------------------|-------------------|------------------|
| Internally Flawless | Very Very Slightly Included | Very Slightly Included | Slightly Included | Included |

ADDITIONAL GRADING INFORMATION

Polish EXCELLENT
Symmetry EXCELLENT
Fluorescence NONE
Inscription(s) IGI 492150956



IGI

October 26, 2021
IGI Report No. 492150956
NATURAL DIAMOND
ROUND BRILLIANT
6.29 - 6.33 x 4.06 mm
Carat Weight 1.01 CARAT
Color Grade J
Clarity Grade VVS 2
Cut Grade VERY GOOD
Depth 64.4%
Table 56%
Girdle Medium To Slightly Thick (Faceted)
Culet Pointed
Polish EXCELLENT
Symmetry EXCELLENT
Fluorescence NONE
Inscription(s) IGI 492150956

