



**INTERNATIONAL
GEMOLOGICAL
INSTITUTE**

492151027

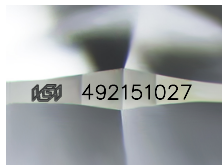


November 15, 2021
IGI Report Number 492151027
NATURAL DIAMOND
ROUND BRILLIANT
5.77 - 5.80 x 3.59 mm
Carat Weight 0.73 CARAT
Color Grade K
Clarity Grade VVS 2
Cut Grade EXCELLENT
Polish EXCELLENT
Symmetry EXCELLENT
Fluorescence VERY SLIGHT
Inscription(s) IGI 492151027
Comments: IDEAL CUT ROUND BRILLIANT

DIAMOND REPORT

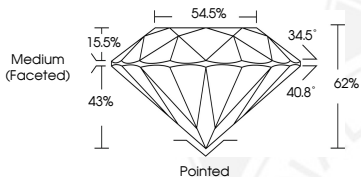
ELECTRONIC COPY

November 15, 2021
IGI Report Number 492151027
Description NATURAL DIAMOND
Shape and Cutting Style ROUND BRILLIANT
Measurements 5.77 - 5.80 x 3.59 mm



GRADING RESULTS

Carat Weight 0.73 CARAT
Color Grade K
Clarity Grade VVS 2
Cut Grade EXCELLENT



ADDITIONAL GRADING INFORMATION

Polish EXCELLENT
Symmetry EXCELLENT
Fluorescence VERY SLIGHT

Identification Features CRYSTAL
Inscription(s) IGI 492151027
Comments: IDEAL CUT ROUND BRILLIANT



COLOR

D - F	G - J	K - M	N - R	S - Z	FANCY
Colorless	Near Colorless	Slightly Tinted	Very Light Color	Light Color	

CLARITY

IF	VVS ⁻²	VS ¹⁻²	SI ¹⁻²	I ¹⁻²
Internally Flawless	Very Very Slightly Included	Very Slightly Included	Slightly Included	Included



November 15, 2021
IGI Report Number 492151027
NATURAL DIAMOND
ROUND BRILLIANT
5.77 - 5.80 x 3.59 mm
Carat Weight 0.73 CARAT
Color Grade K
Clarity Grade VVS 2
Cut Grade EXCELLENT
Polish EXCELLENT
Symmetry EXCELLENT
Fluorescence VERY SLIGHT
Inscription(s) IGI 492151027
Comments: IDEAL CUT ROUND BRILLIANT