



496133546

**DIAMOND REPORT** **ELECTRONIC COPY**

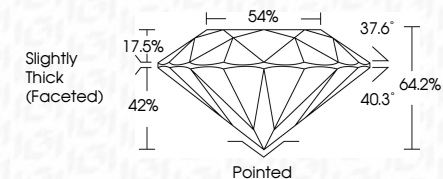


November 23, 2021

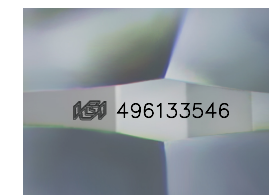
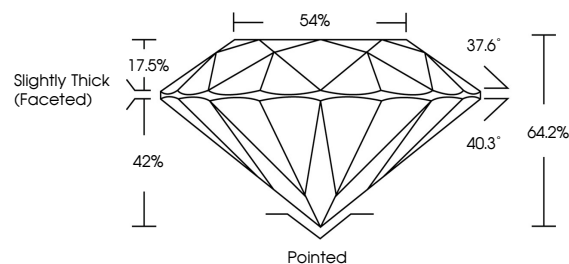
IGI Report Number 496133546  
Description NATURAL DIAMOND  
Shape and Cutting Style ROUND BRILLIANT  
Measurements 6.29 - 6.34 x 4.06 mm

**GRADING RESULTS**

Carat Weight 1.01 CARAT  
Color Grade G  
Clarity Grade VS 1  
Cut Grade VERY GOOD



**PROPORTIONS**



**ADDITIONAL GRADING INFORMATION**

Polish EXCELLENT  
Symmetry EXCELLENT  
Fluorescence SLIGHT  
Inscription(s) IGI 496133546



**IGI**

November 23, 2021  
IGI Report No 496133546  
NATURAL DIAMOND  
ROUND BRILLIANT  
6.29 - 6.34 x 4.06 mm  
Carat Weight 1.01 CARAT  
Color Grade G  
Clarity Grade VS 1  
Cut Grade VERY GOOD  
Depth 64.2%  
Table 54%  
Girdle Slightly Thick (Faceted)  
Culet Pointed  
Polish EXCELLENT  
Symmetry EXCELLENT  
Fluorescence SLIGHT  
Inscription(s) IGI 496133546

November 23, 2021  
IGI Report Number 496133546  
Description NATURAL DIAMOND  
Shape and Cutting Style ROUND BRILLIANT  
Measurements 6.29 - 6.34 x 4.06 mm

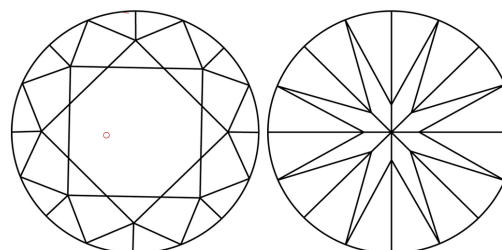
**GRADING RESULTS**

Carat Weight 1.01 CARAT  
Color Grade G  
Clarity Grade VS 1  
Cut Grade VERY GOOD

**ADDITIONAL GRADING INFORMATION**

Polish EXCELLENT  
Symmetry EXCELLENT  
Fluorescence SLIGHT  
Inscription(s) IGI 496133546

**CLARITY CHARACTERISTICS**



**KEY TO SYMBOLS**

Red symbols indicate internal characteristics.  
Green symbols indicate external characteristics.



**COLOR**

D - F	G - J	K - M	N - R	S - Z	FANCY
Colorless	Near Colorless	Slightly Tinted	Very Light Color	Light Color	

**CLARITY**

IF	VVS <sup>1-2</sup>	VS <sup>1-2</sup>	SI <sup>1-2</sup>	I <sup>1-3</sup>
Internally Flawless	Very Very Slightly Included	Very Slightly Included	Slightly Included	Included