



516280423

**DIAMOND REPORT** **ELECTRONIC COPY**

March 30, 2022  
 IGI Report Number 516280423  
 Description NATURAL DIAMOND  
 Shape and Cutting Style ROUND BRILLIANT  
 Measurements 6.47 - 6.50 x 4.00 mm

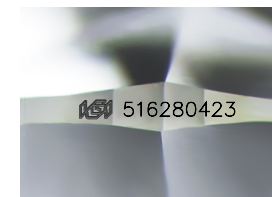
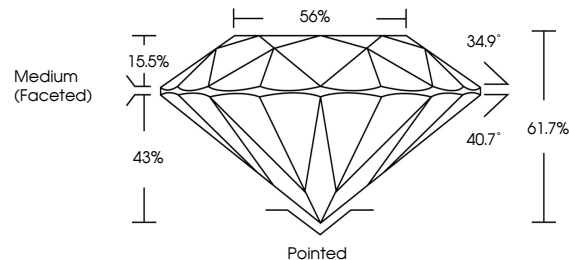
**GRADING RESULTS**

Carat Weight 1.03 CARAT  
 Color Grade J  
 Clarity Grade VVS 2  
 Cut Grade EXCELLENT

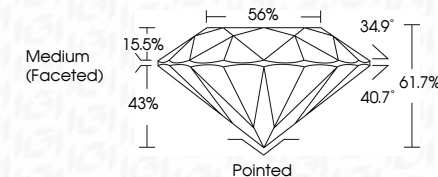
**ADDITIONAL GRADING INFORMATION**

Polish EXCELLENT  
 Symmetry EXCELLENT  
 Fluorescence VERY SLIGHT  
 Inscription(s) IGI 516280423  
 Comments: IDEAL CUT ROUND BRILLIANT

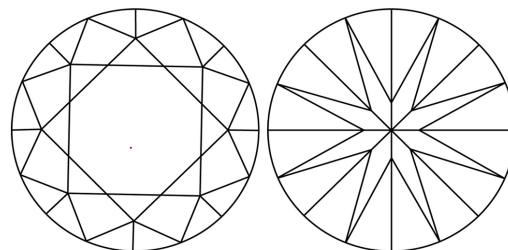
**PROPORTIONS**



Sample Image Used



**CLARITY CHARACTERISTICS**



**KEY TO SYMBOLS**

Red symbols indicate internal characteristics.  
 Green symbols indicate external characteristics.

**COLOR**

D - F	G - J	K - M	N - R	S - Z	FANCY
Colorless	Near Colorless	Slightly Tinted	Very Light Color	Light Color	

**CLARITY**

IF	VVS <sup>1-2</sup>	VS <sup>1-2</sup>	SI <sup>1-2</sup>	I <sup>1-3</sup>
Internally Flawless	Very Very Slightly Included	Very Slightly Included	Slightly Included	Included

**ADDITIONAL GRADING INFORMATION**

Polish EXCELLENT  
 Symmetry EXCELLENT  
 Fluorescence VERY SLIGHT  
 Inscription(s) IGI 516280423  
 Comments: IDEAL CUT ROUND BRILLIANT



March 30, 2022  
 IGI Report No 516280423  
 NATURAL DIAMOND  
 ROUND BRILLIANT  
 6.47 - 6.50 x 4.00 mm  
 Carat Weight 1.03 CARAT  
 Color Grade J  
 Clarity Grade VVS 2  
 Cut Grade EXCELLENT  
 Depth 61.7%  
 Table 56%  
 Grade Medium (Faceted)  
 Cut Pointed  
 Polish EXCELLENT  
 Symmetry EXCELLENT  
 Fluorescence VERY SLIGHT  
 Inscription(s) IGI 516280423  
 Comments: IDEAL CUT ROUND BRILLIANT