



**INTERNATIONAL
GEMOLOGICAL
INSTITUTE**

519236621



April 25, 2022
IGI Report Number 519236621
NATURAL DIAMOND
ROUND BRILLIANT
4.82 - 4.85 x 3.00 mm
Carat Weight 0.43 CARAT
Color Grade H
Clarity Grade VVS 2
Cut Grade EXCELLENT
Polish EXCELLENT
Symmetry EXCELLENT
Fluorescence NONE
Inscription(s) IGI 519236621
Comments: IDEAL CUT ROUND BRILLIANT

DIAMOND REPORT

ELECTRONIC COPY

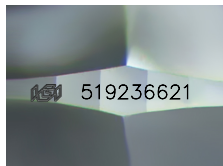
April 25, 2022
IGI Report Number 519236621
Description NATURAL DIAMOND
Shape and Cutting Style ROUND BRILLIANT
Measurements 4.82 - 4.85 x 3.00 mm

GRADING RESULTS

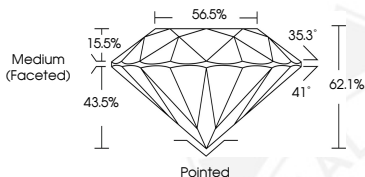
Carat Weight 0.43 CARAT
Color Grade H
Clarity Grade VVS 2
Cut Grade EXCELLENT

ADDITIONAL GRADING INFORMATION

Polish EXCELLENT
Symmetry EXCELLENT
Fluorescence NONE
Identification Features PINPOINT
Inscription(s) IGI 519236621
Comments: IDEAL CUT ROUND BRILLIANT



Sample Image Used



COLOR

D - F	G - J	K - M	N - R	S - Z	FANCY
Colorless	Near Colorless	Slightly Tinted	Very Light Color	Light Color	

CLARITY

IF	VVS ¹⁻²	VS ¹⁻²	SI ¹⁻²	I ¹⁻²
Internally Flawless	Very Very Slightly Included	Very Slightly Included	Slightly Included	Included



April 25, 2022
IGI Report Number 519236621
NATURAL DIAMOND
ROUND BRILLIANT
4.82 - 4.85 x 3.00 mm
Carat Weight 0.43 CARAT
Color Grade H
Clarity Grade VVS 2
Cut Grade EXCELLENT
Polish EXCELLENT
Symmetry EXCELLENT
Fluorescence NONE
Inscription(s) IGI 519236621
Comments: IDEAL CUT ROUND BRILLIANT

