



519236641

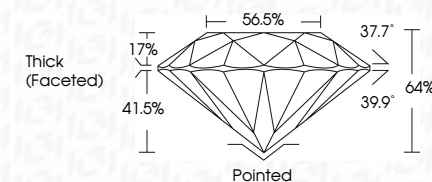
DIAMOND REPORT **ELECTRONIC COPY**



April 14, 2022
IGI Report Number 519236641
Description NATURAL DIAMOND
Shape and Cutting Style ROUND BRILLIANT
Measurements 6.25 - 6.30 x 4.02 mm

GRADING RESULTS

Carat Weight 1.02 CARAT
Color Grade G
Clarity Grade VVS 2
Cut Grade VERY GOOD



April 14, 2022
IGI Report Number 519236641
Description NATURAL DIAMOND
Shape and Cutting Style ROUND BRILLIANT
Measurements 6.25 - 6.30 x 4.02 mm

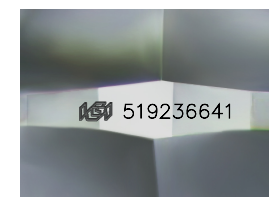
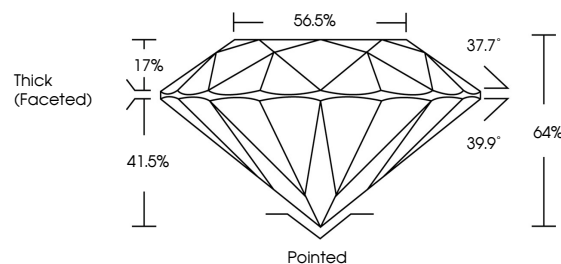
GRADING RESULTS

Carat Weight 1.02 CARAT
Color Grade G
Clarity Grade VVS 2
Cut Grade VERY GOOD

ADDITIONAL GRADING INFORMATION

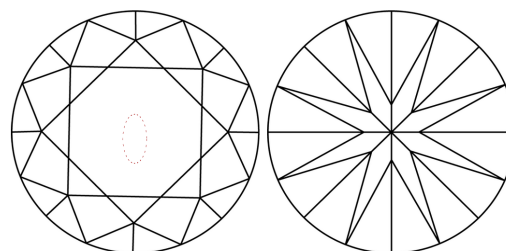
Polish EXCELLENT
Symmetry EXCELLENT
Fluorescence NONE
Inscription(s) IGI 519236641

PROPORTIONS



Sample Image Used

CLARITY CHARACTERISTICS



KEY TO SYMBOLS

Red symbols indicate internal characteristics.
Green symbols indicate external characteristics.

COLOR

D - F	G - J	K - M	N - R	S - Z	FANCY
Colorless	Near Colorless	Slightly Tinted	Very Light Color	Light Color	

CLARITY

IF	VVS ¹⁻²	VS ¹⁻²	SI ¹⁻²	I ¹⁻³
Internally Flawless	Very Very Slightly Included	Very Slightly Included	Slightly Included	Included

ADDITIONAL GRADING INFORMATION

Polish EXCELLENT
Symmetry EXCELLENT
Fluorescence NONE
Inscription(s) IGI 519236641



IGI

April 14, 2022
IGI Report No 519236641
NATURAL DIAMOND
ROUND BRILLIANT
6.25 - 6.30 x 4.02 mm
Carat Weight 1.02 CARAT
Color Grade G
Clarity Grade VVS 2
Cut Grade VERY GOOD
Depth 64%
Table 56.5%
Girdle Thick (Faceted)
Culet Pointed
Polish EXCELLENT
Symmetry EXCELLENT
Fluorescence NONE
Inscription(s) IGI 519236641