



519236681

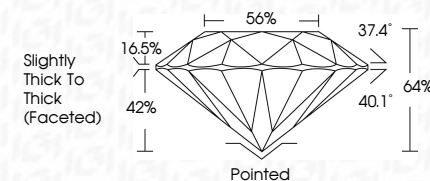
DIAMOND REPORT **ELECTRONIC COPY**



April 12, 2022
IGI Report Number 519236681
Description NATURAL DIAMOND
Shape and Cutting Style ROUND BRILLIANT
Measurements 6.26 - 6.31 x 4.01 mm

GRADING RESULTS

Carat Weight 1.01 CARAT
Color Grade H
Clarity Grade VS 1
Cut Grade VERY GOOD



April 12, 2022
IGI Report Number 519236681
Description NATURAL DIAMOND
Shape and Cutting Style ROUND BRILLIANT
Measurements 6.26 - 6.31 x 4.01 mm

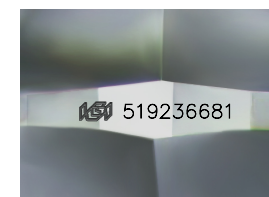
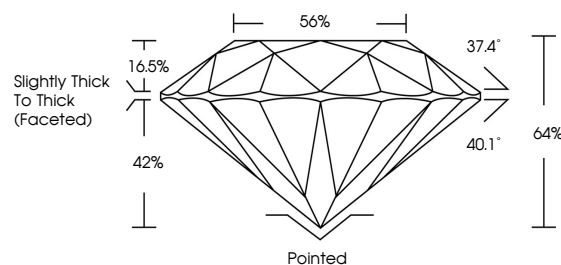
GRADING RESULTS

Carat Weight 1.01 CARAT
Color Grade H
Clarity Grade VS 1
Cut Grade VERY GOOD

ADDITIONAL GRADING INFORMATION

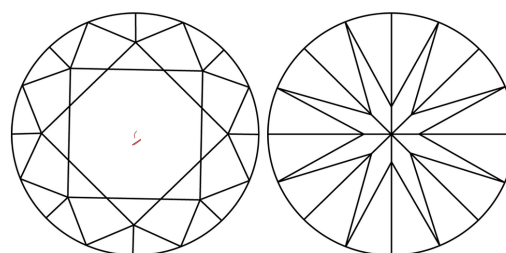
Polish EXCELLENT
Symmetry EXCELLENT
Fluorescence VERY SLIGHT
Inscription(s) IGI 519236681

PROPORTIONS



Sample Image Used

CLARITY CHARACTERISTICS



KEY TO SYMBOLS

Red symbols indicate internal characteristics.
Green symbols indicate external characteristics.

COLOR

D - F	G - J	K - M	N - R	S - Z	FANCY
Colorless	Near Colorless	Slightly Tinted	Very Light Color	Light Color	

CLARITY

IF	VVS ¹⁻²	VS ¹⁻²	SI ¹⁻²	I ¹⁻³
Internally Flawless	Very Very Slightly Included	Very Slightly Included	Slightly Included	Included

ADDITIONAL GRADING INFORMATION

Polish EXCELLENT
Symmetry EXCELLENT
Fluorescence VERY SLIGHT
Inscription(s) IGI 519236681



April 12, 2022
IGI Report No 519236681
NATURAL DIAMOND
ROUND BRILLIANT
6.26 - 6.31 x 4.01 mm
Carat Weight 1.01 CARAT
Color Grade H
Clarity Grade VS 1
Cut Grade VERY GOOD
Depth 64%
Table 56%
Girdle Slightly Thick To Thick (Faceted)
Culet Pointed
Polish EXCELLENT
Symmetry EXCELLENT
Fluorescence VERY SLIGHT
Inscription(s) IGI 519236681