



520203476

DIAMOND REPORT **ELECTRONIC COPY**



May 11, 2022
IGI Report Number 520203476
Description NATURAL DIAMOND
Shape and Cutting Style ROUND BRILLIANT
Measurements 6.31 - 6.34 x 4.07 mm

GRADING RESULTS

Carat Weight 1.01 CARAT
Color Grade E
Clarity Grade SI 1
Cut Grade VERY GOOD

May 11, 2022
IGI Report Number 520203476
Description NATURAL DIAMOND
Shape and Cutting Style ROUND BRILLIANT
Measurements 6.31 - 6.34 x 4.07 mm

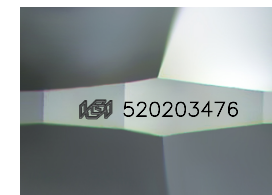
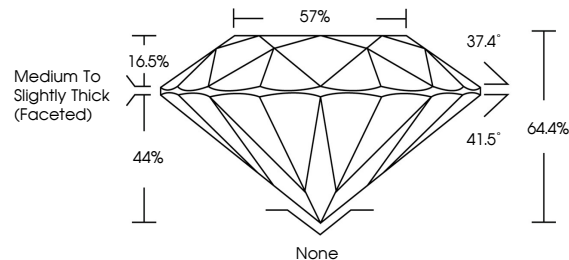
GRADING RESULTS

Carat Weight 1.01 CARAT
Color Grade E
Clarity Grade SI 1
Cut Grade VERY GOOD

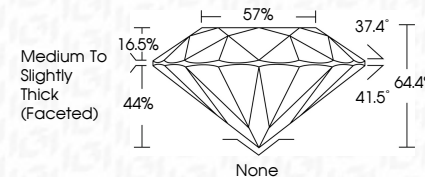
ADDITIONAL GRADING INFORMATION

Polish EXCELLENT
Symmetry EXCELLENT
Fluorescence VERY SLIGHT
Inscription(s) IGI 520203476

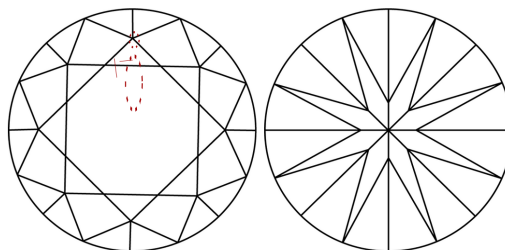
PROPORTIONS



Sample Image Used



CLARITY CHARACTERISTICS



KEY TO SYMBOLS

Red symbols indicate internal characteristics.
Green symbols indicate external characteristics.

COLOR

D - F	G - J	K - M	N - R	S - Z	FANCY
Colorless	Near Colorless	Slightly Tinted	Very Light Color	Light Color	

CLARITY

IF	VVS ¹⁻²	VS ¹⁻²	SI ¹⁻²	I ¹⁻³
Internally Flawless	Very Very Slightly Included	Very Slightly Included	Slightly Included	Included

ADDITIONAL GRADING INFORMATION

Polish EXCELLENT
Symmetry EXCELLENT
Fluorescence VERY SLIGHT
Inscription(s) IGI 520203476



IGI

May 11, 2022
IGI Report No 520203476
NATURAL DIAMOND
ROUND BRILLIANT
6.31 - 6.34 x 4.07 mm
Carat Weight 1.01 CARAT
Color Grade E
Clarity Grade SI 1
Cut Grade VERY GOOD
Depth 64.4%
Table 57%
Girdle Medium To Slightly Thick (Faceted)
Culet None
Polish EXCELLENT
Symmetry EXCELLENT
Fluorescence VERY SLIGHT
Inscription(s) IGI 520203476