



520203481

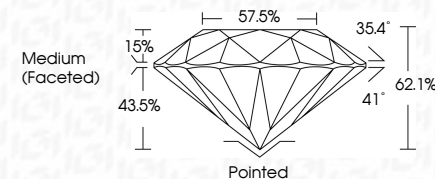
DIAMOND REPORT **ELECTRONIC COPY**



November 10, 2022
 IGI Report Number 520203481
 Description NATURAL DIAMOND
 Shape and Cutting Style ROUND BRILLIANT
 Measurements 7.33 - 7.37 x 4.56 mm

GRADING RESULTS

Carat Weight 1.51 CARAT
 Color Grade G
 Clarity Grade INTERNALLY FLAWLESS
 Cut Grade EXCELLENT



November 10, 2022
 IGI Report Number 520203481
 Description NATURAL DIAMOND
 Shape and Cutting Style ROUND BRILLIANT
 Measurements 7.33 - 7.37 x 4.56 mm

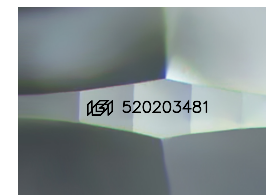
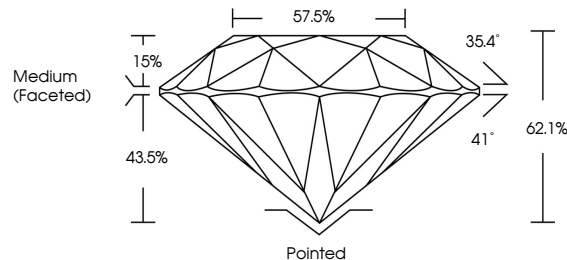
GRADING RESULTS

Carat Weight 1.51 CARAT
 Color Grade G
 Clarity Grade INTERNALLY FLAWLESS
 Cut Grade EXCELLENT

ADDITIONAL GRADING INFORMATION

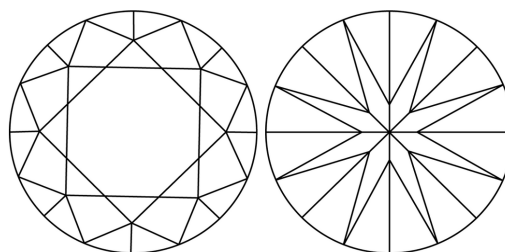
Polish EXCELLENT
 Symmetry EXCELLENT
 Fluorescence SLIGHT
 Inscription(s) IGI 520203481
 Comments: IDEAL CUT ROUND BRILLIANT

PROPORTIONS



Sample Image Used

CLARITY CHARACTERISTICS



KEY TO SYMBOLS

Red symbols indicate internal characteristics.
 Green symbols indicate external characteristics.

COLOR

D - F	G - J	K - M	N - R	S - Z	FANCY
Colorless	Near Colorless	Slightly Tinted	Very Light Color	Light Color	

CLARITY

IF	VVS ¹⁻²	VS ¹⁻²	SI ¹⁻²	I ¹⁻³
Internally Flawless	Very Very Slightly Included	Very Slightly Included	Slightly Included	Included

ADDITIONAL GRADING INFORMATION

Polish EXCELLENT
 Symmetry EXCELLENT
 Fluorescence SLIGHT
 Inscription(s) IGI 520203481
 Comments: IDEAL CUT ROUND BRILLIANT



IGI



November 10, 2022
 IGI Report No. 520203481
 NATURAL DIAMOND
 ROUND BRILLIANT
 7.33 - 7.37 x 4.56 mm
 Carat Weight 1.51 CARAT
 Color Grade G
 Clarity Grade IF
 Cut Grade EXCELLENT
 Depth 62.1%
 Table 57.5%
 Grade Medium (Faceted)
 Culet Pointed
 Polish EXCELLENT
 Symmetry EXCELLENT
 Fluorescence SLIGHT
 Inscription(s) IGI 520203481
 Comments: IDEAL CUT ROUND BRILLIANT