



520203495

**DIAMOND REPORT** **ELECTRONIC COPY**

May 11, 2022

IGI Report Number 520203495  
Description NATURAL DIAMOND  
Shape and Cutting Style ROUND BRILLIANT  
Measurements 6.33 - 6.38 x 4.03 mm

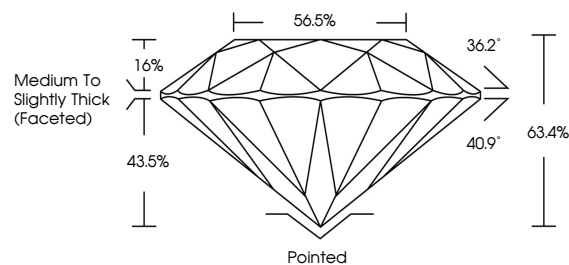
**GRADING RESULTS**

Carat Weight 1.01 CARAT  
Color Grade K  
Clarity Grade VS 1  
Cut Grade EXCELLENT

**ADDITIONAL GRADING INFORMATION**

Polish EXCELLENT  
Symmetry EXCELLENT  
Fluorescence SLIGHT  
Inscription(s) IGI 520203495

**PROPORTIONS**



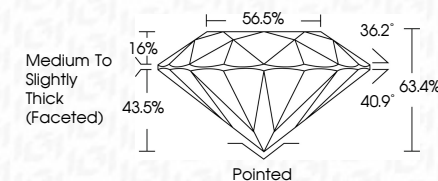
Sample Image Used



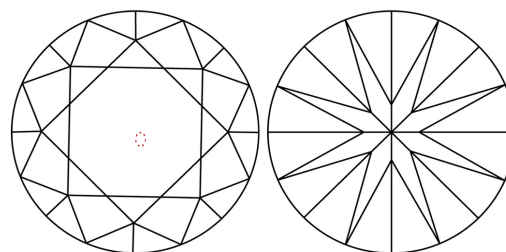
May 11, 2022  
IGI Report Number 520203495  
Description NATURAL DIAMOND  
Shape and Cutting Style ROUND BRILLIANT  
Measurements 6.33 - 6.38 x 4.03 mm

**GRADING RESULTS**

Carat Weight 1.01 CARAT  
Color Grade K  
Clarity Grade VS 1  
Cut Grade EXCELLENT



**CLARITY CHARACTERISTICS**



**KEY TO SYMBOLS**

Red symbols indicate internal characteristics.  
Green symbols indicate external characteristics.

**COLOR**

D - F	G - J	K - M	N - R	S - Z	FANCY
Colorless	Near Colorless	Slightly Tinted	Very Light Color	Light Color	

**CLARITY**

IF	VVS <sup>1-2</sup>	VS <sup>1-2</sup>	SI <sup>1-2</sup>	I <sup>1-3</sup>
Internally Flawless	Very Very Slightly Included	Very Slightly Included	Slightly Included	Included

**ADDITIONAL GRADING INFORMATION**

Polish EXCELLENT  
Symmetry EXCELLENT  
Fluorescence SLIGHT  
Inscription(s) IGI 520203495



**IGI**

May 11, 2022  
IGI Report No 520203495  
NATURAL DIAMOND  
ROUND BRILLIANT  
6.33 - 6.38 x 4.03 mm  
Carat Weight 1.01 CARAT  
Color Grade K  
Clarity Grade VS 1  
Cut Grade EXCELLENT  
Depth 63.4%  
Table 56.5%  
Grade Medium To Slightly Thick (Faceted)  
Pointed  
Polish EXCELLENT  
Symmetry EXCELLENT  
Fluorescence SLIGHT  
Inscription(s) IGI 520203495