



**INTERNATIONAL
GEMOLOGICAL
INSTITUTE**

DIAMOND REPORT

ELECTRONIC COPY

May 20, 2022
IGI Report Number 523201862
Description NATURAL DIAMOND
Shape and Cutting Style ROUND BRILLIANT
Measurements 4.40 - 4.42 x 2.72 mm

GRADING RESULTS

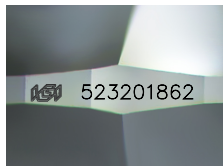
Carat Weight 0.32 CARAT
Color Grade D
Clarity Grade INTERNALLY FLAWLESS
Cut Grade EXCELLENT

ADDITIONAL GRADING INFORMATION

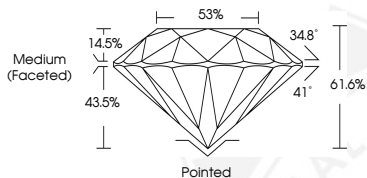
Polish EXCELLENT
Symmetry EXCELLENT
Fluorescence VERY SLIGHT
Inscription(s) IGI 523201862
Comments: IDEAL CUT ROUND BRILLIANT



523201862



Sample Image Used



COLOR

| D - F | G - J | K - M | N - R | S - Z | FANCY |
|-----------|----------------|-----------------|------------------|-------------|-------|
| Colorless | Near Colorless | Slightly Tinted | Very Light Color | Light Color | |

CLARITY

| IF | VVS ¹⁻² | VS ¹⁻² | SI ¹⁻² | I ¹⁻² |
|---------------------|-----------------------------|------------------------|-------------------|------------------|
| Internally Flawless | Very Very Slightly Included | Very Slightly Included | Slightly Included | Included |



May 20, 2022
IGI Report Number 523201862
NATURAL DIAMOND
ROUND BRILLIANT
4.40 - 4.42 x 2.72 mm
Carat Weight 0.32 CARAT
Color Grade D
Clarity Grade INTERNALLY FLAWLESS
Cut Grade EXCELLENT
Polish EXCELLENT
Symmetry EXCELLENT
Fluorescence VERY SLIGHT
Inscription(s) IGI 523201862
Comments: IDEAL CUT ROUND BRILLIANT



May 20, 2022
IGI Report Number 523201862
NATURAL DIAMOND
ROUND BRILLIANT
4.40 - 4.42 x 2.72 mm
Carat Weight 0.32 CARAT
Color Grade D
Clarity Grade INTERNALLY FLAWLESS
Cut Grade EXCELLENT
Polish EXCELLENT
Symmetry EXCELLENT
Fluorescence VERY SLIGHT
Inscription(s) IGI 523201862
Comments: IDEAL CUT ROUND BRILLIANT