



INTERNATIONAL GEMOLOGICAL INSTITUTE

DIAMOND REPORT

ELECTRONIC COPY

May 25, 2022
IGI Report Number 523201866
Description NATURAL DIAMOND
Shape and Cutting Style ROUND BRILLIANT
Measurements 5.07 - 5.09 x 3.13 mm

GRADING RESULTS

Carat Weight 0.50 CARAT
Color Grade H
Clarity Grade VVS 2
Cut Grade EXCELLENT

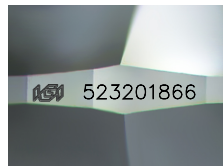
ADDITIONAL GRADING INFORMATION

Polish EXCELLENT
Symmetry EXCELLENT
Fluorescence VERY SLIGHT

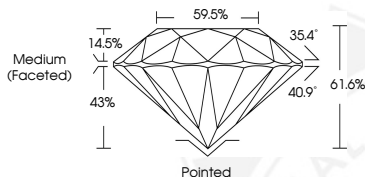
Identification Features PINPOINT, FEATHER
Inscription(s) IGI 523201866
Comments: IDEAL CUT ROUND BRILLIANT



523201866



Sample Image Used



COLOR

D - F	G - J	K - M	N - R	S - Z	FANCY
Colorless	Near Colorless	Slightly Tinted	Very Light Color	Light Color	

CLARITY

IF	VVS ¹⁻²	VS ¹⁻²	SI ¹⁻²	I ¹⁻²
Internally Flawless	Very Very Slightly Included	Very Slightly Included	Slightly Included	Included



May 25, 2022
IGI Report Number 523201866
NATURAL DIAMOND
ROUND BRILLIANT
5.07 - 5.09 x 3.13 mm
Carat Weight 0.50 CARAT
Color Grade H
Clarity Grade VVS 2
Cut Grade EXCELLENT
Polish EXCELLENT
Symmetry EXCELLENT
Fluorescence VERY SLIGHT
Inscription(s) IGI 523201866
Comments: IDEAL CUT ROUND BRILLIANT



May 25, 2022
IGI Report Number 523201866
NATURAL DIAMOND
ROUND BRILLIANT
5.07 - 5.09 x 3.13 mm
Carat Weight 0.50 CARAT
Color Grade H
Clarity Grade VVS 2
Cut Grade EXCELLENT
Polish EXCELLENT
Symmetry EXCELLENT
Fluorescence VERY SLIGHT
Inscription(s) IGI 523201866
Comments: IDEAL CUT ROUND BRILLIANT

