



**INTERNATIONAL  
GEMOLOGICAL  
INSTITUTE**

523201915

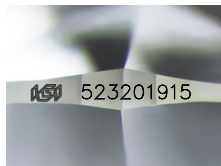


May 25, 2022  
IGI Report Number 523201915  
NATURAL DIAMOND  
ROUND BRILLIANT  
5.26 - 5.29 x 3.26 mm  
Carat Weight 0.56 CARAT  
Color Grade L  
Clarity Grade VS 2  
Cut Grade EXCELLENT  
Polish EXCELLENT  
Symmetry EXCELLENT  
Fluorescence NONE  
Inscription(s) IGI 523201915  
Comments: IDEAL CUT ROUND BRILLIANT

**DIAMOND REPORT**

**ELECTRONIC COPY**

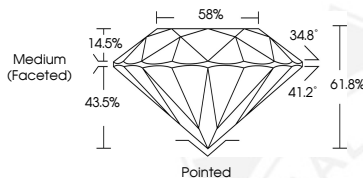
May 25, 2022  
IGI Report Number 523201915  
Description NATURAL DIAMOND  
Shape and Cutting Style ROUND BRILLIANT  
Measurements 5.26 - 5.29 x 3.26 mm



Sample Image Used

**GRADING RESULTS**

Carat Weight 0.56 CARAT  
Color Grade L  
Clarity Grade VS 2  
Cut Grade EXCELLENT



**ADDITIONAL GRADING INFORMATION**

Polish EXCELLENT  
Symmetry EXCELLENT  
Fluorescence NONE  
Identification Features CRYSTAL  
Inscription(s) IGI 523201915  
Comments: IDEAL CUT ROUND BRILLIANT



May 25, 2022  
IGI Report Number 523201915  
NATURAL DIAMOND  
ROUND BRILLIANT  
5.26 - 5.29 x 3.26 mm  
Carat Weight 0.56 CARAT  
Color Grade L  
Clarity Grade VS 2  
Cut Grade EXCELLENT  
Polish EXCELLENT  
Symmetry EXCELLENT  
Fluorescence NONE  
Inscription(s) IGI 523201915  
Comments: IDEAL CUT ROUND BRILLIANT

**COLOR**

D - F	G - J	K - M	N - R	S - Z	FANCY
Colorless	Near Colorless	Slightly Tinted	Very Light Color	Light Color	

**CLARITY**

IF	VVS <sup>1-2</sup>	VS <sup>1-2</sup>	SI <sup>1-2</sup>	I <sup>1-2</sup>
Internally Flawless	Very Very Slightly Included	Very Slightly Included	Slightly Included	Included

