



523201919

DIAMOND REPORT ELECTRONIC COPY

May 11, 2022
 IGI Report Number 523201919
 Description NATURAL DIAMOND
 Shape and Cutting Style ROUND BRILLIANT
 Measurements 7.03 - 7.08 x 4.36 mm

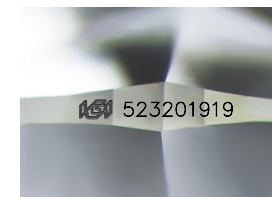
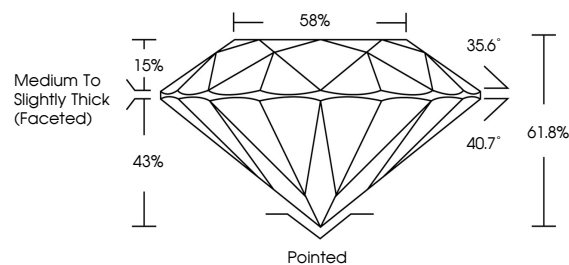
GRADING RESULTS

Carat Weight 1.35 CARAT
 Color Grade I
 Clarity Grade SI 1
 Cut Grade EXCELLENT

ADDITIONAL GRADING INFORMATION

Polish EXCELLENT
 Symmetry EXCELLENT
 Fluorescence NONE
 Inscription(s) IGI 523201919
 Comments: IDEAL CUT ROUND BRILLIANT

PROPORTIONS



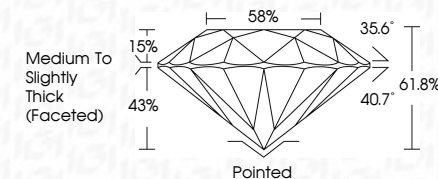
Sample Image Used



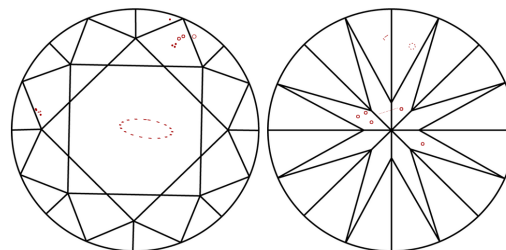
May 11, 2022
 IGI Report Number 523201919
 Description NATURAL DIAMOND
 Shape and Cutting Style ROUND BRILLIANT
 Measurements 7.03 - 7.08 x 4.36 mm

GRADING RESULTS

Carat Weight 1.35 CARAT
 Color Grade I
 Clarity Grade SI 1
 Cut Grade EXCELLENT



CLARITY CHARACTERISTICS



KEY TO SYMBOLS

Red symbols indicate internal characteristics.
 Green symbols indicate external characteristics.

COLOR

D - F	G - J	K - M	N - R	S - Z	FANCY
Colorless	Near Colorless	Slightly Tinted	Very Light Color	Light Color	

CLARITY

IF	VVS ¹⁻²	VS ¹⁻²	SI ¹⁻²	I ¹⁻³
Internally Flawless	Very Very Slightly Included	Very Slightly Included	Slightly Included	Included

ADDITIONAL GRADING INFORMATION

Polish EXCELLENT
 Symmetry EXCELLENT
 Fluorescence NONE
 Inscription(s) IGI 523201919
 Comments: IDEAL CUT ROUND BRILLIANT



IGI

May 11, 2022
 IGI Report No 523201919
 NATURAL DIAMOND
 ROUND BRILLIANT
 7.03 - 7.08 x 4.36 mm
 Carat Weight 1.35 CARAT
 Color Grade I
 Clarity Grade SI 1
 Cut Grade EXCELLENT
 Depth 61.8%
 Table 58%
 Girdle Medium To Slightly Thick (Faceted)
 Culet Pointed
 Polish EXCELLENT
 Symmetry EXCELLENT
 Fluorescence NONE
 Inscription(s) IGI 523201919
 Comments: IDEAL CUT ROUND BRILLIANT