



528210366

DIAMOND REPORT **ELECTRONIC COPY**

July 7, 2022
 IGI Report Number 528210366
 Description NATURAL DIAMOND
 Shape and Cutting Style ROUND BRILLIANT
 Measurements 5.12 - 5.15 x 3.15 mm

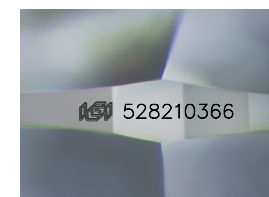
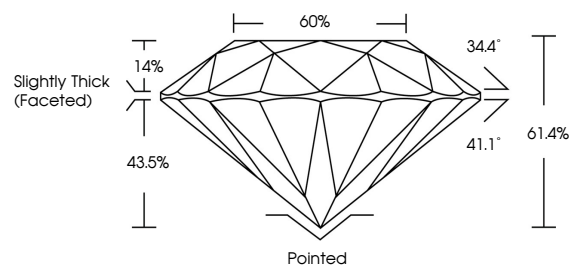
GRADING RESULTS

Carat Weight 0.51 CARAT
 Color Grade G
 Clarity Grade INTERNALLY FLAWLESS
 Cut Grade EXCELLENT

ADDITIONAL GRADING INFORMATION

Polish EXCELLENT
 Symmetry EXCELLENT
 Fluorescence NONE
 Inscription(s) IGI 528210366

PROPORTIONS



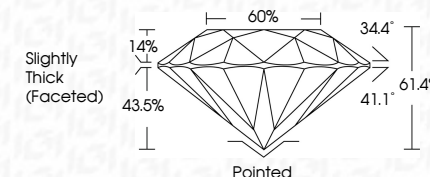
Sample Image Used



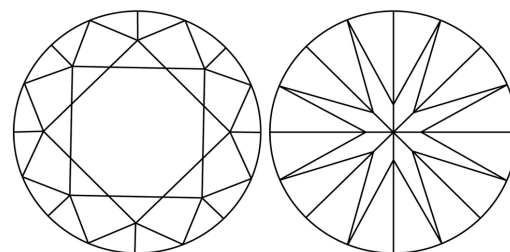
July 7, 2022
 IGI Report Number 528210366
 Description NATURAL DIAMOND
 Shape and Cutting Style ROUND BRILLIANT
 Measurements 5.12 - 5.15 x 3.15 mm

GRADING RESULTS

Carat Weight 0.51 CARAT
 Color Grade G
 Clarity Grade INTERNALLY FLAWLESS
 Cut Grade EXCELLENT



CLARITY CHARACTERISTICS



KEY TO SYMBOLS

Red symbols indicate internal characteristics.
 Green symbols indicate external characteristics.

COLOR

D - F	G - J	K - M	N - R	S - Z	FANCY
Colorless	Near Colorless	Slightly Tinted	Very Light Color	Light Color	

CLARITY

IF	VVS ¹⁻²	VS ¹⁻²	SI ¹⁻²	I ¹⁻³
Internally Flawless	Very Very Slightly Included	Very Slightly Included	Slightly Included	Included

ADDITIONAL GRADING INFORMATION

Polish EXCELLENT
 Symmetry EXCELLENT
 Fluorescence NONE
 Inscription(s) IGI 528210366



IGI

July 7, 2022
 IGI Report No 528210366
 NATURAL DIAMOND
 ROUND BRILLIANT
 5.12 - 5.15 x 3.15 mm
 Carat Weight 0.51 CARAT
 Color Grade G
 Clarity Grade IF
 Cut Grade EXCELLENT
 Depth 61.4%
 Table 60%
 Grade Slightly Thick (Faceted)
 Pointed
 Polish EXCELLENT
 Symmetry EXCELLENT
 Fluorescence NONE
 Inscription(s) IGI 528210366