



INTERNATIONAL GEMOLOGICAL INSTITUTE

DIAMOND REPORT

ELECTRONIC COPY

July 4, 2022
IGI Report Number 528210457
Description NATURAL DIAMOND
Shape and Cutting Style ROUND BRILLIANT
Measurements 4.40 - 4.42 x 2.72 mm

GRADING RESULTS

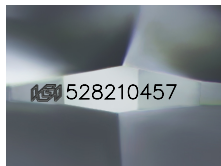
Carat Weight 0.32 CARAT
Color Grade G
Clarity Grade INTERNALLY FLAWLESS
Cut Grade EXCELLENT

ADDITIONAL GRADING INFORMATION

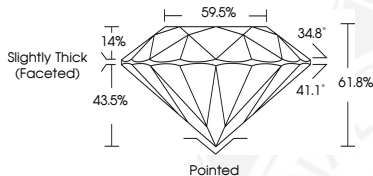
Polish EXCELLENT
Symmetry EXCELLENT
Fluorescence NONE
Inscription(s) IGI 528210457
Comments: IDEAL CUT ROUND BRILLIANT



528210457



Sample Image Used



COLOR

D - F	G - J	K - M	N - R	S - Z	FANCY
Colorless	Near Colorless	Slightly Tinted	Very Light Color	Light Color	

CLARITY

IF	VVS ¹⁻²	VS ¹⁻²	SI ¹⁻²	I ¹⁻²
Internally Flawless	Very Very Slightly Included	Very Slightly Included	Slightly Included	Included

© IGI 2020, International Gemological Institute

FD - 10 20



July 4, 2022
IGI Report Number 528210457
NATURAL DIAMOND
ROUND BRILLIANT
4.40 - 4.42 x 2.72 mm
Carat Weight 0.32 CARAT
Color Grade G
Clarity Grade INTERNALLY FLAWLESS
Cut Grade EXCELLENT
Polish EXCELLENT
Symmetry EXCELLENT
Fluorescence NONE
Inscription(s) IGI 528210457
Comments: IDEAL CUT ROUND BRILLIANT



July 4, 2022
IGI Report Number 528210457
NATURAL DIAMOND
ROUND BRILLIANT
4.40 - 4.42 x 2.72 mm
Carat Weight 0.32 CARAT
Color Grade G
Clarity Grade INTERNALLY FLAWLESS
Cut Grade EXCELLENT
Polish EXCELLENT
Symmetry EXCELLENT
Fluorescence NONE
Inscription(s) IGI 528210457
Comments: IDEAL CUT ROUND BRILLIANT



THIS DOCUMENT WAS PRODUCED WITH THE FOLLOWING SECURITY MEASURES: SPECIAL DOCUMENT PAPER, INK SCREENS, WATERMARK, BACKGROUND DESIGNS, HOLOGRAM AND OTHER SECURITY FEATURES NOT LISTED AND DO EXCEED DOCUMENT SECURITY INDUSTRY GUIDELINES.