



528210530

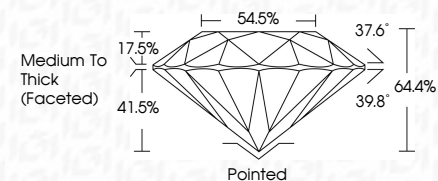
DIAMOND REPORT **ELECTRONIC COPY**



June 8, 2022
IGI Report Number 528210530
Description NATURAL DIAMOND
Shape and Cutting Style ROUND BRILLIANT
Measurements 6.24 - 6.27 x 4.03 mm

GRADING RESULTS

Carat Weight 1.01 CARAT
Color Grade H
Clarity Grade VS 1
Cut Grade VERY GOOD



June 8, 2022
IGI Report Number 528210530
Description NATURAL DIAMOND
Shape and Cutting Style ROUND BRILLIANT
Measurements 6.24 - 6.27 x 4.03 mm

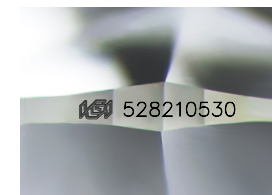
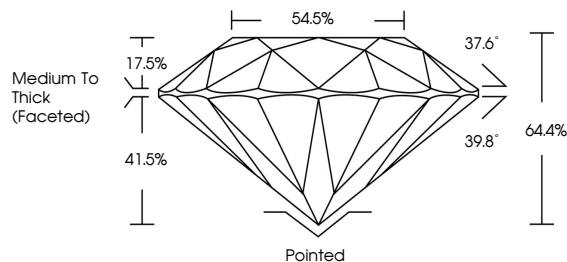
GRADING RESULTS

Carat Weight 1.01 CARAT
Color Grade H
Clarity Grade VS 1
Cut Grade VERY GOOD

ADDITIONAL GRADING INFORMATION

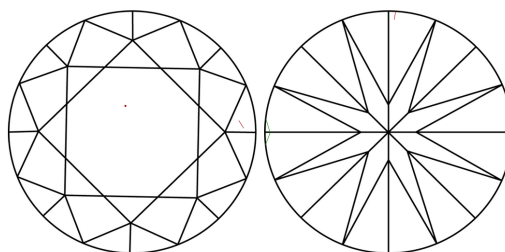
Polish EXCELLENT
Symmetry VERY GOOD
Fluorescence VERY SLIGHT
Inscription(s) IGI 528210530

PROPORTIONS



Sample Image Used

CLARITY CHARACTERISTICS



KEY TO SYMBOLS

Red symbols indicate internal characteristics.
Green symbols indicate external characteristics.

COLOR

D - F	G - J	K - M	N - R	S - Z	FANCY
Colorless	Near Colorless	Slightly Tinted	Very Light Color	Light Color	

CLARITY

IF	VVS ¹⁻²	VS ¹⁻²	SI ¹⁻²	I ¹⁻³
Internally Flawless	Very Very Slightly Included	Very Slightly Included	Slightly Included	Included

ADDITIONAL GRADING INFORMATION

Polish EXCELLENT
Symmetry VERY GOOD
Fluorescence VERY SLIGHT
Inscription(s) IGI 528210530



IGI

June 8, 2022
IGI Report No 528210530
NATURAL DIAMOND
ROUND BRILLIANT
6.24 - 6.27 x 4.03 mm
Carat Weight 1.01 CARAT
Color Grade H
Clarity Grade VS 1
Cut Grade VERY GOOD
Depth 64.4%
Table 54.5%
Girdle Medium To Thick (Faceted)
Culet Pointed
Polish EXCELLENT
Symmetry VERY GOOD
Fluorescence VERY SLIGHT
Inscription(s) IGI 528210530