



**INTERNATIONAL  
GEMOLOGICAL  
INSTITUTE**

528212498



June 27, 2022  
IGI Report Number 528212498  
NATURAL DIAMOND  
ROUND BRILLIANT  
3.59 - 3.62 x 2.23 mm  
Carat Weight 0.18 CARAT  
Color Grade E  
Clarity Grade VS 1  
Cut Grade EXCELLENT  
Polish EXCELLENT  
Symmetry EXCELLENT  
Fluorescence NONE  
Inscription(s) IGI 528212498  
Comments: IDEAL CUT ROUND  
BRILLIANT

**DIAMOND REPORT**

**ELECTRONIC COPY**

June 27, 2022  
IGI Report Number 528212498  
Description NATURAL DIAMOND  
Shape and Cutting Style ROUND BRILLIANT  
Measurements 3.59 - 3.62 x 2.23 mm

**GRADING RESULTS**

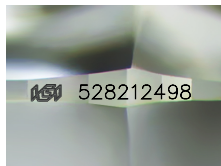
Carat Weight 0.18 CARAT  
Color Grade E  
Clarity Grade VS 1  
Cut Grade EXCELLENT

**ADDITIONAL GRADING INFORMATION**

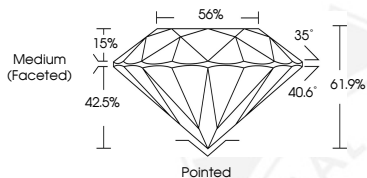
Polish EXCELLENT  
Symmetry EXCELLENT  
Fluorescence NONE

Identification Features ETCH CHANNEL, NEEDLE, PINPOINT  
Inscription(s) IGI 528212498

Comments: IDEAL CUT ROUND BRILLIANT



Sample Image Used



June 27, 2022  
IGI Report Number 528212498  
NATURAL DIAMOND  
ROUND BRILLIANT  
3.59 - 3.62 x 2.23 mm  
Carat Weight 0.18 CARAT  
Color Grade E  
Clarity Grade VS 1  
Cut Grade EXCELLENT  
Polish EXCELLENT  
Symmetry EXCELLENT  
Fluorescence NONE  
Inscription(s) IGI 528212498  
Comments: IDEAL CUT ROUND  
BRILLIANT

**COLOR**

| D - F     | G - J          | K - M           | N - R            | S - Z       | FANCY |
|-----------|----------------|-----------------|------------------|-------------|-------|
| Colorless | Near Colorless | Slightly Tinted | Very Light Color | Light Color |       |

**CLARITY**

| IF                  | VVS <sup>1-2</sup>          | VS <sup>1-2</sup>      | SI <sup>1-2</sup> | I <sup>1-2</sup> |
|---------------------|-----------------------------|------------------------|-------------------|------------------|
| Internally Flawless | Very Very Slightly Included | Very Slightly Included | Slightly Included | Included         |

