



**INTERNATIONAL
GEMOLOGICAL
INSTITUTE**

528212610

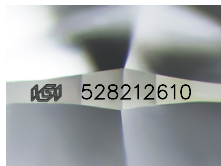


June 8, 2022
IGI Report Number 528212610
NATURAL DIAMOND
ROUND BRILLIANT
3.64 - 3.66 x 2.26 mm
Carat Weight 0.186 CARAT
Color Grade F
Clarity Grade VVS 1
Cut Grade EXCELLENT
Polish EXCELLENT
Symmetry EXCELLENT
Fluorescence NONE
Inscription(s) IGI 528212610
Comments: IDEAL CUT ROUND BRILLIANT

DIAMOND REPORT

ELECTRONIC COPY

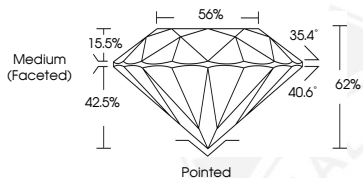
June 8, 2022
IGI Report Number 528212610
Description NATURAL DIAMOND
Shape and Cutting Style ROUND BRILLIANT
Measurements 3.64 - 3.66 x 2.26 mm



Sample Image Used

GRADING RESULTS

Carat Weight 0.186 CARAT
Color Grade F
Clarity Grade VVS 1
Cut Grade EXCELLENT



ADDITIONAL GRADING INFORMATION

Polish EXCELLENT
Symmetry EXCELLENT
Fluorescence NONE
Identification Features FEATHER
Inscription(s) IGI 528212610
Comments: IDEAL CUT ROUND BRILLIANT



June 8, 2022
IGI Report Number 528212610
NATURAL DIAMOND
ROUND BRILLIANT
3.64 - 3.66 x 2.26 mm
Carat Weight 0.186 CARAT
Color Grade F
Clarity Grade VVS 1
Cut Grade EXCELLENT
Polish EXCELLENT
Symmetry EXCELLENT
Fluorescence NONE
Inscription(s) IGI 528212610
Comments: IDEAL CUT ROUND BRILLIANT

COLOR

D - F	G - J	K - M	N - R	S - Z	FANCY
Colorless	Near Colorless	Slightly Tinted	Very Light Color	Light Color	

CLARITY

IF	VVS ¹⁻²	VS ¹⁻²	SI ¹⁻²	I ¹⁻²
Internally Flawless	Very Very Slightly Included	Very Slightly Included	Slightly Included	Included

