



**INTERNATIONAL
GEMOLOGICAL
INSTITUTE**

DIAMOND REPORT

ELECTRONIC COPY

June 17, 2022
IGI Report Number 530232249
Description NATURAL DIAMOND
Shape and Cutting Style ROUND BRILLIANT
Measurements 3.64 - 3.66 x 2.24 mm

GRADING RESULTS

Carat Weight 0.182 CARAT
Color Grade D
Clarity Grade VVS 2
Cut Grade EXCELLENT

ADDITIONAL GRADING INFORMATION

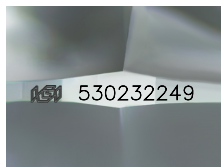
Polish EXCELLENT
Symmetry EXCELLENT
Fluorescence NONE

Identification Features CRYSTAL
Inscription(s) IGI 530232249

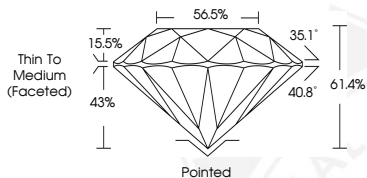
Comments: IDEAL CUT ROUND BRILLIANT



530232249



Sample Image Used



COLOR

D - F	G - J	K - M	N - R	S - Z	FANCY
Colorless	Near Colorless	Slightly Tinted	Very Light Color	Light Color	

CLARITY

IF	VVS ¹⁻²	VS ¹⁻²	SI ¹⁻²	I ¹⁻²
Internally Flawless	Very Very Slightly Included	Very Slightly Included	Slightly Included	Included



June 17, 2022
IGI Report Number 530232249
NATURAL DIAMOND
ROUND BRILLIANT
3.64 - 3.66 x 2.24 mm
Carat Weight 0.182 CARAT
Color Grade D
Clarity Grade VVS 2
Cut Grade EXCELLENT
Polish EXCELLENT
Symmetry EXCELLENT
Fluorescence NONE
Inscription(s) IGI 530232249
Comments: IDEAL CUT ROUND BRILLIANT



June 17, 2022
IGI Report Number 530232249
NATURAL DIAMOND
ROUND BRILLIANT
3.64 - 3.66 x 2.24 mm
Carat Weight 0.182 CARAT
Color Grade D
Clarity Grade VVS 2
Cut Grade EXCELLENT
Polish EXCELLENT
Symmetry EXCELLENT
Fluorescence NONE
Inscription(s) IGI 530232249
Comments: IDEAL CUT ROUND BRILLIANT

