



**INTERNATIONAL  
GEMOLOGICAL  
INSTITUTE**

530232311

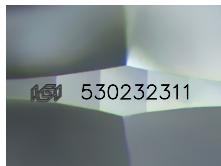


June 9, 2022  
IGI Report Number 530232311  
NATURAL DIAMOND  
ROUND BRILLIANT  
3.64 - 3.67 x 2.25 mm  
Carat Weight 0.182 CARAT  
Color Grade I  
Clarity Grade INTERNALLY  
FLAWLESS  
Cut Grade EXCELLENT  
Polish EXCELLENT  
Symmetry EXCELLENT  
Fluorescence NONE  
Inscription(s) IGI 530232311  
Comments: IDEAL CUT ROUND  
BRILLIANT

**DIAMOND REPORT**

**ELECTRONIC COPY**

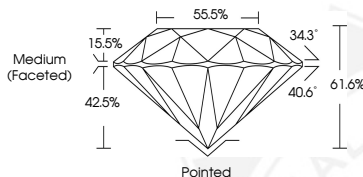
June 9, 2022  
IGI Report Number 530232311  
Description NATURAL DIAMOND  
Shape and Cutting Style ROUND BRILLIANT  
Measurements 3.64 - 3.67 x 2.25 mm



Sample Image Used

**GRADING RESULTS**

Carat Weight 0.182 CARAT  
Color Grade I  
Clarity Grade INTERNALLY FLAWLESS  
Cut Grade EXCELLENT



June 9, 2022  
IGI Report Number 530232311  
NATURAL DIAMOND  
ROUND BRILLIANT  
3.64 - 3.67 x 2.25 mm  
Carat Weight 0.182 CARAT  
Color Grade I  
Clarity Grade INTERNALLY  
FLAWLESS  
Cut Grade EXCELLENT  
Polish EXCELLENT  
Symmetry EXCELLENT  
Fluorescence NONE  
Inscription(s) IGI 530232311  
Comments: IDEAL CUT ROUND  
BRILLIANT

**ADDITIONAL GRADING INFORMATION**

Polish EXCELLENT  
Symmetry EXCELLENT  
Fluorescence NONE  
Inscription(s) IGI 530232311  
Comments: IDEAL CUT ROUND BRILLIANT

**COLOR**

D - F	G - J	K - M	N - R	S - Z	FANCY
Colorless	Near Colorless	Slightly Tinted	Very Light Color	Light Color	

**CLARITY**

IF	VVS <sup>1-2</sup>	VS <sup>1-2</sup>	SI <sup>1-2</sup>	I <sup>1-2</sup>
Internally Flawless	Very Very Slightly Included	Very Slightly Included	Slightly Included	Included

