



571384611

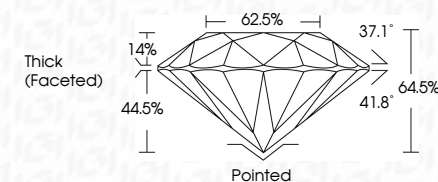
**DIAMOND REPORT** **ELECTRONIC COPY**



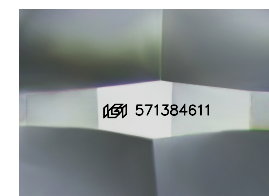
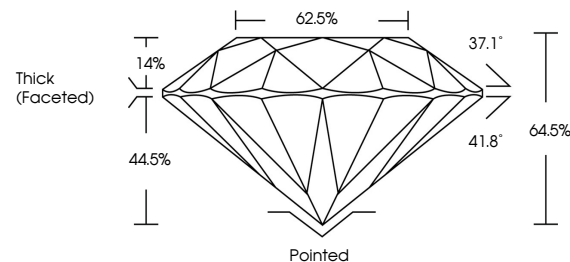
April 28, 2023  
IGI Report Number 571384611  
Description NATURAL DIAMOND  
Shape and Cutting Style ROUND BRILLIANT  
Measurements 6.21 - 6.28 x 4.03 mm

**GRADING RESULTS**

Carat Weight 1.01 CARAT  
Color Grade F  
Clarity Grade VS 2  
Cut Grade VERY GOOD



**PROPORTIONS**



Sample Image Used

**ADDITIONAL GRADING INFORMATION**

Polish EXCELLENT  
Symmetry EXCELLENT  
Fluorescence VERY SLIGHT  
Inscription(s) IGI 571384611



**IGI**

April 28, 2023  
IGI Report No 571384611  
NATURAL DIAMOND  
ROUND BRILLIANT  
6.21 - 6.28 x 4.03 mm  
Carat Weight 1.01 CARAT  
Color Grade F  
Clarity Grade VS 2  
Cut Grade VERY GOOD  
Depth 64.5%  
Table 62.5%  
Girdle Thick (Faceted)  
Culet Pointed  
Polish EXCELLENT  
Symmetry EXCELLENT  
Fluorescence VERY SLIGHT  
Inscription(s) IGI 571384611

April 28, 2023  
IGI Report Number 571384611  
Description NATURAL DIAMOND  
Shape and Cutting Style ROUND BRILLIANT  
Measurements 6.21 - 6.28 x 4.03 mm

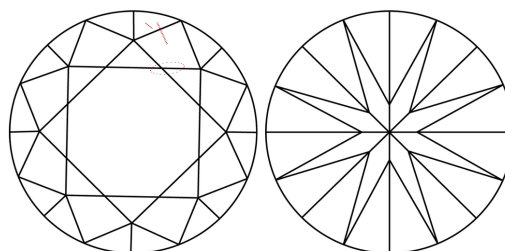
**GRADING RESULTS**

Carat Weight 1.01 CARAT  
Color Grade F  
Clarity Grade VS 2  
Cut Grade VERY GOOD

**ADDITIONAL GRADING INFORMATION**

Polish EXCELLENT  
Symmetry EXCELLENT  
Fluorescence VERY SLIGHT  
Inscription(s) IGI 571384611

**CLARITY CHARACTERISTICS**



**KEY TO SYMBOLS**

Red symbols indicate internal characteristics.  
Green symbols indicate external characteristics.

**COLOR**

D - F	G - J	K - M	N - R	S - Z	FANCY
Colorless	Near Colorless	Slightly Tinted	Very Light Color	Light Color	

**CLARITY**

IF	VVS <sup>1-2</sup>	VS <sup>1-2</sup>	SI <sup>1-2</sup>	I <sup>1-3</sup>
Internally Flawless	Very Very Slightly Included	Very Slightly Included	Slightly Included	Included

