



578354315

Measurements	6.31 - 6.37 x 4.02 mm
--------------	-----------------------

Cut Grade EXCELLENT

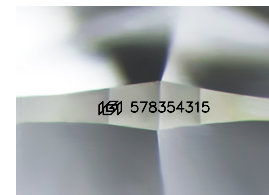
Inscription(s)  578354315



Diagram illustrating the proportions of a diamond cut, labeled "Medium To Slightly Thick (Faceted)". The diagram shows a diamond shape with various measurements:

- Width: 56%
- Depth: 43%
- Table: 16.5%
- Crown Angle: 36.5°
- Pavilion Angle: 40.7°
- Total Height: 63.5%
- Bottom: Pointed

Red symbols indicate internal characteristics.  
Green symbols indicate external characteristics.



Sample Image Used

D - F      G - J      K - M      N - R      S - Z      FANCY

Colorless	Near Colorless	Slightly Tinted	Very Light Color	Light Color
-----------	-------------------	--------------------	---------------------	----------------

IF                      VVS<sup>1-2</sup>                      VS<sup>1-2</sup>                      SI<sup>1-2</sup>                      I<sup>1-3</sup>

Internally Flawless	Very Very Slightly Included	Very Slightly Included	Slightly Included	Included
------------------------	--------------------------------	---------------------------	----------------------	----------



© IGI 2020, International Gemological Institute

FD - 10 20

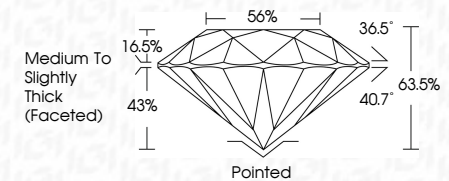


THIS DOCUMENT WAS PRODUCED WITH THE FOLLOWING SECURITY MEASURES: SPECIAL DOCUMENT PAPER, INK SCREENS, WATERMARK BACKGROUND DESIGNS, HOLOGRAM AND OTHER SECURITY FEATURES NOT LISTED AND DO EXCEED DOCUMENT SECURITY INDUSTRY GUIDELINES.



Measurements	6.31 - 6.37 x 4.02 mm
--------------	-----------------------

Cut Grade	EXCELLENT
-----------	-----------



Inscription(s)  578354315



IGI

June 6, 2023  
IGI Report No 578354315  
NATURAL DIAMOND  
ROUND BRILLIANT

6.31 - 6.37 x 402 mm

Carat Weight	1.01 CARAT
Color Grade	F

Clarity Grade

Cut Grade

EXCELLENT

Depth	63.5%	54%
Table		

Medium To Slightly  
Girdle

Thick (Faceted)

	Cure	Pointed
Polish	EXCELLENT	

Symmetry

Fluorescence	NONE
Inscription(s)	151 578354315