



578354431

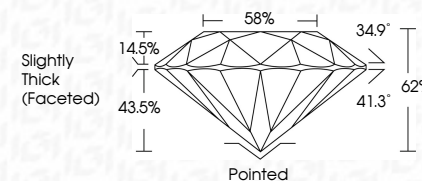
**DIAMOND REPORT** **ELECTRONIC COPY**



June 9, 2023  
 IGI Report Number 578354431  
 Description NATURAL DIAMOND  
 Shape and Cutting Style ROUND BRILLIANT  
 Measurements 5.48 - 5.50 x 3.41 mm

**GRADING RESULTS**

Carat Weight 0.63 CARAT  
 Color Grade H  
 Clarity Grade INTERNALLY FLAWLESS  
 Cut Grade EXCELLENT



June 9, 2023  
 IGI Report Number 578354431  
 Description NATURAL DIAMOND  
 Shape and Cutting Style ROUND BRILLIANT  
 Measurements 5.48 - 5.50 x 3.41 mm

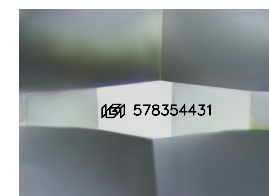
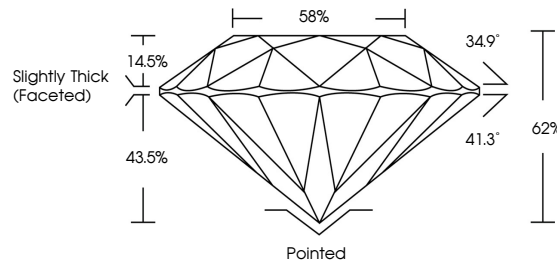
**GRADING RESULTS**

Carat Weight 0.63 CARAT  
 Color Grade H  
 Clarity Grade INTERNALLY FLAWLESS  
 Cut Grade EXCELLENT

**ADDITIONAL GRADING INFORMATION**

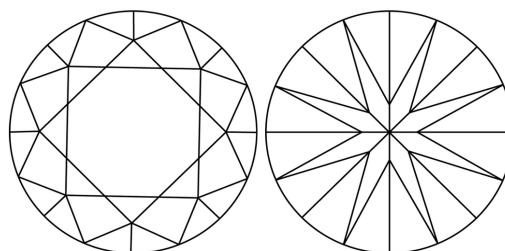
Polish EXCELLENT  
 Symmetry EXCELLENT  
 Fluorescence VERY SLIGHT  
 Inscription(s) IGI 578354431  
 Comments: IDEAL CUT ROUND BRILLIANT

**PROPORTIONS**



Sample Image Used

**CLARITY CHARACTERISTICS**



**KEY TO SYMBOLS**

Red symbols indicate internal characteristics.  
 Green symbols indicate external characteristics.

**COLOR**

D - F	G - J	K - M	N - R	S - Z	FANCY
Colorless	Near Colorless	Slightly Tinted	Very Light Color	Light Color	

**CLARITY**

IF	VVS <sup>1-2</sup>	VS <sup>1-2</sup>	SI <sup>1-2</sup>	I <sup>1-3</sup>
Internally Flawless	Very Very Slightly Included	Very Slightly Included	Slightly Included	Included

**ADDITIONAL GRADING INFORMATION**

Polish EXCELLENT  
 Symmetry EXCELLENT  
 Fluorescence VERY SLIGHT  
 Inscription(s) IGI 578354431  
 Comments: IDEAL CUT ROUND BRILLIANT



**IGI**

June 9, 2023  
 IGI Report No 578354431  
 NATURAL DIAMOND  
 ROUND BRILLIANT  
 5.48 - 5.50 x 3.41 mm  
 Carat Weight 0.63 CARAT  
 Color Grade H  
 Clarity Grade IF  
 Cut Grade EXCELLENT  
 Depth 62%  
 Table 58%  
 Grade Slightly Thick (Faceted)  
 Cut Pointed  
 Polish EXCELLENT  
 Symmetry EXCELLENT  
 Fluorescence VERY SLIGHT  
 Inscription(s) IGI 578354431  
 Comments: IDEAL CUT ROUND BRILLIANT