



INTERNATIONAL GEMOLOGICAL INSTITUTE

DIAMOND REPORT

ELECTRONIC COPY

June 8, 2023
IGI Report Number 578354458
Description NATURAL DIAMOND
Shape and Cutting Style ROUND BRILLIANT
Measurements 5.90 - 5.99 x 3.68 mm

GRADING RESULTS

Carat Weight 0.79 CARAT
Color Grade E
Clarity Grade VS 2
Cut Grade EXCELLENT

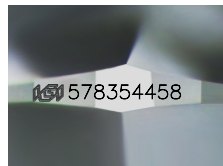
ADDITIONAL GRADING INFORMATION

Polish EXCELLENT
Symmetry EXCELLENT
Fluorescence VERY SLIGHT

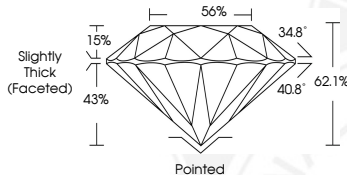
Identification Features CRYSTAL, PINPOINT
Inscription(s) IGI 578354458
Comments: IDEAL CUT ROUND BRILLIANT



578354458



Sample Image Used



COLOR

| D - F | G - J | K - M | N - R | S - Z | FANCY |
|-----------|----------------|-----------------|------------------|-------------|-------|
| Colorless | Near Colorless | Slightly Tinted | Very Light Color | Light Color | |

CLARITY

| IF | VVS ¹⁻² | VS ¹⁻² | SI ¹⁻² | I ¹⁻² |
|---------------------|-----------------------------|------------------------|-------------------|------------------|
| Internally Flawless | Very Very Slightly Included | Very Slightly Included | Slightly Included | Included |

© IGI 2020, International Gemological Institute

FD - 10 20



June 8, 2023
IGI Report Number 578354458
NATURAL DIAMOND
ROUND BRILLIANT
5.90 - 5.99 x 3.68 mm
Carat Weight 0.79 CARAT
Color Grade E
Clarity Grade VS 2
Cut Grade EXCELLENT
Polish EXCELLENT
Symmetry EXCELLENT
Fluorescence VERY SLIGHT
Inscription(s) IGI 578354458
Comments: IDEAL CUT ROUND BRILLIANT



June 8, 2023
IGI Report Number 578354458
NATURAL DIAMOND
ROUND BRILLIANT
5.90 - 5.99 x 3.68 mm
Carat Weight 0.79 CARAT
Color Grade E
Clarity Grade VS 2
Cut Grade EXCELLENT
Polish EXCELLENT
Symmetry EXCELLENT
Fluorescence VERY SLIGHT
Inscription(s) IGI 578354458
Comments: IDEAL CUT ROUND BRILLIANT



THIS DOCUMENT WAS PRODUCED WITH THE FOLLOWING SECURITY MEASURES: SPECIAL DOCUMENT PAPER, INK SCREENS, WATERMARK, BACKGROUND DESIGNS, HOLOGRAM AND OTHER SECURITY FEATURES NOT LISTED AND DO EXCEED DOCUMENT SECURITY INDUSTRY GUIDELINES.