



GIA REPORT  
7528773037

Verify this report at GIA.edu

FACSIMILE

This is a digital representation of the original GIA Report. This representation might not be accepted in lieu of the original GIA Report in certain circumstances. The original GIA Report includes certain security features which are not reproducible on this facsimile.

GIA NATURAL DIAMOND GRADING REPORT

July 11, 2025  
GIA Report Number ..... 7528773037  
Shape and Cutting Style ..... Square Modified Brilliant  
Measurements ..... 5.59 x 5.43 x 4.11 mm

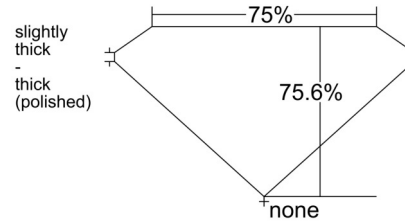
GRADING RESULTS

Carat Weight ..... 1.00 carat  
Color Grade ..... G  
Clarity Grade ..... VS2

ADDITIONAL GRADING INFORMATION

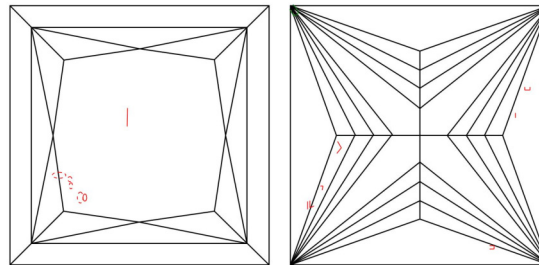
Polish ..... Very Good  
Symmetry ..... Very Good  
Fluorescence ..... None  
Inscription(s): GIA 7528773037

PROPORTIONS



Profile not to actual proportions

CLARITY CHARACTERISTICS



KEY TO SYMBOLS\*

- Cloud
- Crystal
- Feather
- Natural

\* Red symbols denote internal characteristics (inclusions). Green or black symbols denote external characteristics (blemishes). Diagram is an approximate representation of the diamond, and symbols shown indicate type, position, and approximate size of clarity characteristics. All clarity characteristics may not be shown. Details of finish are not shown.

GRADING SCALES

GIA COLOR SCALE		GIA CLARITY SCALE		
COLORLESS	D	VERY VERY SLIGHTLY INCLUDED	FLAWLESS	
	E		INTERNALLY FLAWLESS	
	F		VVS <sub>1</sub>	
NEAR COLORLESS	G		VVS <sub>2</sub>	
	H		VERY SLIGHTLY INCLUDED	VS <sub>1</sub>
	I			VS <sub>2</sub>
J	SLIGHTLY INCLUDED	SI <sub>1</sub>		
FAINT		K	SI <sub>2</sub>	
		L	INCLUDED	I <sub>1</sub>
M	I <sub>2</sub>			
VERY LIGHT	N	I <sub>3</sub>		
	O			
	P			
	Q			
	R			
LIGHT	S			
	T			
	U			
	V			
	W			
	X			
	Y			
Z				



reportcheck.gia.edu



The results documented in this report refer only to the diamond described, and were obtained using the techniques and equipment available to GIA at the time of examination. This report is not a guarantee or valuation. For additional information and important limitations and disclaimers, please see GIA.edu/terms or call +1 800 421 7250 or +1 760 603 4500. ©2023 Gemological Institute of America, Inc.

THE SECURITY FEATURES IN THIS DOCUMENT, INCLUDING THE HOLOGRAM, SECURITY SCREEN AND MICROPRINT LINES, IN ADDITION TO THOSE NOT LISTED, EXCEED DOCUMENT SECURITY INDUSTRY GUIDELINES.

Scan the QR code to access the Tracr™ provenance data.