



# INTERNATIONAL GEMOLOGICAL INSTITUTE

425091507



October 16, 2020  
IGI Report Number 425091507  
NATURAL DIAMOND  
ROUND BRILLIANT  
4.71 - 4.73 x 2.95 mm  
Carat Weight 0.40 CARAT  
Color Grade L  
Clarity Grade VVS 2  
Cut Grade EXCELLENT  
Polish EXCELLENT  
Symmetry EXCELLENT  
Fluorescence NONE  
Inscription(s) IGI 425091507  
Comments: IDEAL CUT ROUND BRILLIANT

## DIAMOND REPORT

## ELECTRONIC COPY

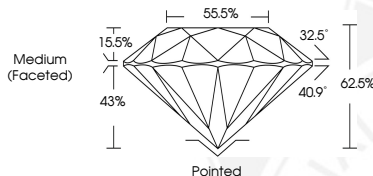
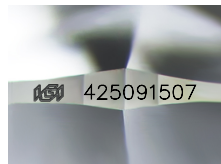
October 16, 2020  
IGI Report Number 425091507  
Description NATURAL DIAMOND  
Shape and Cutting Style ROUND BRILLIANT  
Measurements 4.71 - 4.73 x 2.95 mm

### GRADING RESULTS

Carat Weight 0.40 CARAT  
Color Grade L  
Clarity Grade VVS 2  
Cut Grade EXCELLENT

### ADDITIONAL GRADING INFORMATION

Polish EXCELLENT  
Symmetry EXCELLENT  
Fluorescence NONE  
Inscription(s) IGI 425091507  
Comments: IDEAL CUT ROUND BRILLIANT



### COLOR

D - F	G - J	K - M	N - R	S - Z	FANCY
Colorless	Near Colorless	Slightly Tinted	Very Light Color	Light Color	

### CLARITY

IF	VVS <sup>1-2</sup>	VS <sup>1-2</sup>	SI <sup>1-2</sup>	I <sup>1-2</sup>
Internally Flawless	Very Very Slightly Included	Very Slightly Included	Slightly Included	Included



October 16, 2020  
IGI Report Number 425091507  
NATURAL DIAMOND  
ROUND BRILLIANT  
4.71 - 4.73 x 2.95 mm  
Carat Weight 0.40 CARAT  
Color Grade L  
Clarity Grade VVS 2  
Cut Grade EXCELLENT  
Polish EXCELLENT  
Symmetry EXCELLENT  
Fluorescence NONE  
Inscription(s) IGI 425091507  
Comments: IDEAL CUT ROUND BRILLIANT

