



INTERNATIONAL GEMOLOGICAL INSTITUTE

DIAMOND REPORT

ELECTRONIC COPY

October 6, 2020
IGI Report Number 425091573
Description NATURAL DIAMOND
Shape and Cutting Style ROUND BRILLIANT
Measurements 6.15 - 6.18 x 3.84 mm

GRADING RESULTS

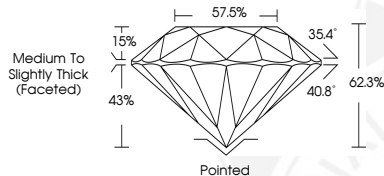
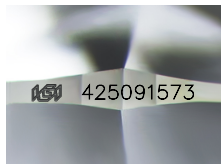
Carat Weight 0.90 CARAT
Color Grade K
Clarity Grade VS 2
Cut Grade EXCELLENT

ADDITIONAL GRADING INFORMATION

Polish EXCELLENT
Symmetry EXCELLENT
Fluorescence NONE
Inscription(s) IGI 425091573
Comments: IDEAL CUT ROUND BRILLIANT



425091573



COLOR

D - F	G - J	K - M	N - R	S - Z	FANCY
Colorless	Near Colorless	Slightly Tinted	Very Light Color	Light Color	

CLARITY

IF	VVS ¹⁻²	VS ¹⁻²	SI ¹⁻²	I ¹⁻²
Internally Flawless	Very Very Slightly Included	Very Slightly Included	Slightly Included	Included

© IGI 2020, International Gemological Institute

FD - 10 20



October 6, 2020
IGI Report Number 425091573
NATURAL DIAMOND
ROUND BRILLIANT
6.15 - 6.18 x 3.84 mm
Carat Weight 0.90 CARAT
Color Grade K
Clarity Grade VS 2
Cut Grade EXCELLENT
Polish EXCELLENT
Symmetry EXCELLENT
Fluorescence NONE
Inscription(s) IGI 425091573
Comments: IDEAL CUT ROUND BRILLIANT



October 6, 2020
IGI Report Number 425091573
NATURAL DIAMOND
ROUND BRILLIANT
6.15 - 6.18 x 3.84 mm
Carat Weight 0.90 CARAT
Color Grade K
Clarity Grade VS 2
Cut Grade EXCELLENT
Polish EXCELLENT
Symmetry EXCELLENT
Fluorescence NONE
Inscription(s) IGI 425091573
Comments: IDEAL CUT ROUND BRILLIANT



THIS DOCUMENT WAS PRODUCED WITH THE FOLLOWING SECURITY MEASURES: SPECIAL DOCUMENT PAPER, INK SCREENS, WATERMARK, BACKGROUND DESIGNS, HOLOGRAM AND OTHER SECURITY FEATURES NOT LISTED AND DO EXCEED DOCUMENT SECURITY INDUSTRY GUIDELINES.