



INTERNATIONAL GEMOLOGICAL INSTITUTE

425091590



November 23, 2020
IGI Report Number 425091590
NATURAL DIAMOND
ROUND BRILLIANT
5.10 - 5.14 x 3.21 mm
Carat Weight 0.52 CARAT
Color Grade M
Clarity Grade SI 1
Cut Grade EXCELLENT
Polish EXCELLENT
Symmetry EXCELLENT
Fluorescence NONE
Inscription(s) IGI 425091590

DIAMOND REPORT

ELECTRONIC COPY

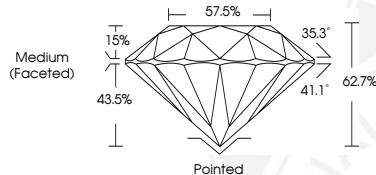
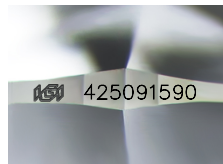
November 23, 2020
IGI Report Number 425091590
Description NATURAL DIAMOND
Shape and Cutting Style ROUND BRILLIANT
Measurements 5.10 - 5.14 x 3.21 mm

GRADING RESULTS

Carat Weight 0.52 CARAT
Color Grade M
Clarity Grade SI 1
Cut Grade EXCELLENT

ADDITIONAL GRADING INFORMATION

Polish EXCELLENT
Symmetry EXCELLENT
Fluorescence NONE
Identification Features CRYSTAL, CLOUD
Inscription(s) IGI 425091590



COLOR

D - F	G - J	K - M	N - R	S - Z	FANCY
Colorless	Near Colorless	Slightly Tinted	Very Light Color	Light Color	

CLARITY

IF	VVS ¹⁻²	VS ¹⁻²	SI ¹⁻²	I ¹⁻²
Internally Flawless	Very Very Slightly Included	Very Slightly Included	Slightly Included	Included



November 23, 2020
IGI Report Number 425091590
NATURAL DIAMOND
ROUND BRILLIANT
5.10 - 5.14 x 3.21 mm
Carat Weight 0.52 CARAT
Color Grade M
Clarity Grade SI 1
Cut Grade EXCELLENT
Polish EXCELLENT
Symmetry EXCELLENT
Fluorescence NONE
Inscription(s) IGI 425091590

© IGI 2020, International Gemological Institute

FD - 10 20



THIS DOCUMENT WAS PRODUCED WITH THE FOLLOWING SECURITY MEASURES: SPECIAL DOCUMENT PAPER, INK SCREENS, WATERMARK BACKGROUND DESIGNS, HOLOGRAM AND OTHER SECURITY FEATURES NOT LISTED AND DO EXCEED DOCUMENT SECURITY INDUSTRY GUIDELINES.