



INTERNATIONAL GEMOLOGICAL INSTITUTE

467132931



May 3, 2021

IGI Report Number 467132931

NATURAL DIAMOND

ROUND BRILLIANT

4.84 - 4.85 x 3.00 mm

Carat Weight 0.43 CARAT

Color Grade M

Clarity Grade VS 1

Cut Grade EXCELLENT

Polish EXCELLENT

Symmetry EXCELLENT

Fluorescence SLIGHT

Inscription(s) IGI 467132931

Comments: IDEAL CUT ROUND
BRILLIANT



May 3, 2021

IGI Report Number 467132931

NATURAL DIAMOND

ROUND BRILLIANT

4.84 - 4.85 x 3.00 mm

Carat Weight 0.43 CARAT

Color Grade M

Clarity Grade VS 1

Cut Grade EXCELLENT

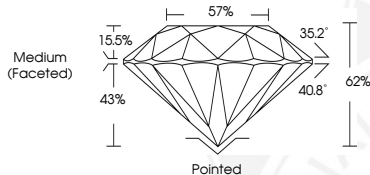
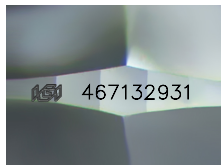
Polish EXCELLENT

Symmetry EXCELLENT

Fluorescence SLIGHT

Inscription(s) IGI 467132931

Comments: IDEAL CUT ROUND
BRILLIANT



DIAMOND REPORT

ELECTRONIC COPY

May 3, 2021

IGI Report Number

467132931

Description

NATURAL DIAMOND

Shape and Cutting Style

ROUND BRILLIANT

Measurements

4.84 - 4.85 x 3.00 mm

GRADING RESULTS

Carat Weight 0.43 CARAT

Color Grade M

Clarity Grade VS 1

Cut Grade EXCELLENT

ADDITIONAL GRADING INFORMATION

Polish EXCELLENT

Symmetry EXCELLENT

Fluorescence SLIGHT

Identification Features CRYSTAL, CLOUD

Inscription(s) IGI 467132931

Comments: IDEAL CUT ROUND BRILLIANT



COLOR

D - F	G - J	K - M	N - R	S - Z	FANCY
Colorless	Near Colorless	Slightly Tinted	Very Light Color	Light Color	

CLARITY

IF	VVS ¹⁻²	VS ¹⁻²	SI ¹⁻²	I ¹⁻²
Internally Flawless	Very Very Slightly Included	Very Slightly Included	Slightly Included	Included

© IGI 2020, International Gemological Institute

FD - 10 20



THIS DOCUMENT WAS PRODUCED WITH THE FOLLOWING SECURITY MEASURES: SPECIAL DOCUMENT PAPER, INK SCREENS, WATERMARK BACKGROUND DESIGNS, HOLOGRAM AND OTHER SECURITY FEATURES NOT LISTED AND DO EXCEED DOCUMENT SECURITY INDUSTRY GUIDELINES.