



INTERNATIONAL GEMOLOGICAL INSTITUTE

480138371



July 12, 2021

IGI Report Number 480138371

NATURAL DIAMOND

ROUND BRILLIANT

5.19 - 5.22 x 3.08 mm

Carat Weight 0.51 CARAT

Color Grade J

Clarity Grade VS 2

Cut Grade EXCELLENT

Polish EXCELLENT

Symmetry EXCELLENT

Fluorescence NONE

Inscription(s) IGI 480138371

DIAMOND REPORT

ELECTRONIC COPY

July 12, 2021

IGI Report Number

480138371

Description

NATURAL DIAMOND

Shape and Cutting Style

ROUND BRILLIANT

Measurements

5.19 - 5.22 x 3.08 mm

GRADING RESULTS

Carat Weight

0.51 CARAT

Color Grade

J

Clarity Grade

VS 2

Cut Grade

EXCELLENT

ADDITIONAL GRADING INFORMATION

Polish

EXCELLENT

Symmetry

EXCELLENT

Fluorescence

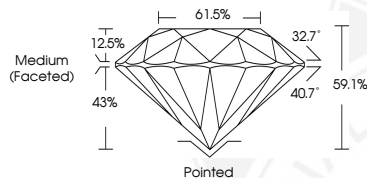
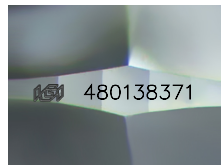
NONE

Identification Features

FEATHER, CLOUD

Inscription(s)

IGI 480138371



COLOR

D - F	G - J	K - M	N - R	S - Z	FANCY
Colorless	Near Colorless	Slightly Tinted	Very Light Color	Light Color	

CLARITY

IF	VVS ¹⁻²	VS ¹⁻²	SI ¹⁻²	I ¹⁻²
Internally Flawless	Very Very Slightly Included	Very Slightly Included	Slightly Included	Included



July 12, 2021

IGI Report Number 480138371

NATURAL DIAMOND

ROUND BRILLIANT

5.19 - 5.22 x 3.08 mm

Carat Weight 0.51 CARAT

Color Grade J

Clarity Grade VS 2

Cut Grade EXCELLENT

Polish EXCELLENT

Symmetry EXCELLENT

Fluorescence NONE

Inscription(s) IGI 480138371

© IGI 2020, International Gemological Institute

FD - 10 20



THIS DOCUMENT WAS PRODUCED WITH THE FOLLOWING SECURITY MEASURES: SPECIAL DOCUMENT PAPER, INK SCREENS, WATERMARK BACKGROUND DESIGNS, HOLOGRAM AND OTHER SECURITY FEATURES NOT LISTED AND DO EXCEED DOCUMENT SECURITY INDUSTRY GUIDELINES.