



INTERNATIONAL GEMOLOGICAL INSTITUTE

496133555



November 8, 2021

IGI Report Number 496133555

NATURAL DIAMOND

ROUND BRILLIANT

6.19 - 6.23 x 3.81 mm

Carat Weight 0.91 CARAT

Color Grade J

Clarity Grade VS 2

Cut Grade EXCELLENT

Polish EXCELLENT

Symmetry EXCELLENT

Fluorescence VERY SLIGHT

Inscription(s) IGI 496133555

DIAMOND REPORT

ELECTRONIC COPY

November 8, 2021

IGI Report Number

496133555

Description

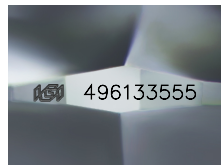
NATURAL DIAMOND

Shape and Cutting Style

ROUND BRILLIANT

Measurements

6.19 - 6.23 x 3.81 mm



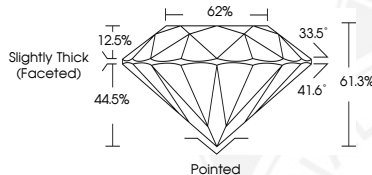
GRADING RESULTS

Carat Weight 0.91 CARAT

Color Grade J

Clarity Grade VS 2

Cut Grade EXCELLENT



ADDITIONAL GRADING INFORMATION

Polish EXCELLENT

Symmetry EXCELLENT

Fluorescence VERY SLIGHT

Identification Features

CRYSTAL

Inscription(s) IGI 496133555



November 8, 2021

IGI Report Number 496133555

NATURAL DIAMOND

ROUND BRILLIANT

6.19 - 6.23 x 3.81 mm

Carat Weight 0.91 CARAT

Color Grade J

Clarity Grade VS 2

Cut Grade EXCELLENT

Polish EXCELLENT

Symmetry EXCELLENT

Fluorescence VERY SLIGHT

Inscription(s) IGI 496133555

COLOR

D - F	G - J	K - M	N - R	S - Z	FANCY
Colorless	Near Colorless	Slightly Tinted	Very Light Color	Light Color	

CLARITY

IF	VVS ¹⁻²	VS ¹⁻²	SI ¹⁻²	I ¹⁻²
Internally Flawless	Very Very Slightly Included	Very Slightly Included	Slightly Included	Included



© IGI 2020, International Gemological Institute

FD - 10 20



THIS DOCUMENT WAS PRODUCED WITH THE FOLLOWING SECURITY MEASURES: SPECIAL DOCUMENT PAPER, INK SCREENS, WATERMARK BACKGROUND DESIGNS, HOLOGRAM AND OTHER SECURITY FEATURES NOT LISTED AND DO EXCEED DOCUMENT SECURITY INDUSTRY GUIDELINES.