



INTERNATIONAL GEMOLOGICAL INSTITUTE

499102429



November 23, 2021

IGI Report Number 499102429

NATURAL DIAMOND

ROUND BRILLIANT

5.26 - 5.30 x 3.21 mm

Carat Weight 0.55 CARAT

Color Grade I

Clarity Grade VS 1

Cut Grade EXCELLENT

Polish EXCELLENT

Symmetry EXCELLENT

Fluorescence VERY SLIGHT

Inscription(s) IGI 499102429

DIAMOND REPORT

ELECTRONIC COPY

November 23, 2021

IGI Report Number

499102429

Description

NATURAL DIAMOND

Shape and Cutting Style

ROUND BRILLIANT

Measurements

5.26 - 5.30 x 3.21 mm

GRADING RESULTS

Carat Weight 0.55 CARAT

Color Grade I

Clarity Grade VS 1

Cut Grade EXCELLENT

ADDITIONAL GRADING INFORMATION

Polish EXCELLENT

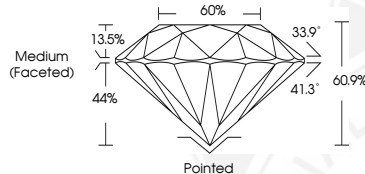
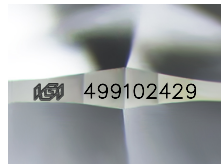
Symmetry EXCELLENT

Fluorescence VERY SLIGHT

Identification Features

CRYSTAL

Inscription(s) IGI 499102429



COLOR

D - F	G - J	K - M	N - R	S - Z	FANCY
Colorless	Near Colorless	Slightly Tinted	Very Light Color	Light Color	

CLARITY

IF	VS ¹⁻²	VS ¹⁻²	SI ¹⁻²	I ¹⁻²
Internally Flawless	Very Very Slightly Included	Very Slightly Included	Slightly Included	Included



November 23, 2021

IGI Report Number 499102429

NATURAL DIAMOND

ROUND BRILLIANT

5.26 - 5.30 x 3.21 mm

Carat Weight 0.55 CARAT

Color Grade I

Clarity Grade VS 1

Cut Grade EXCELLENT

Polish EXCELLENT

Symmetry EXCELLENT

Fluorescence VERY SLIGHT

Inscription(s) IGI 499102429



© IGI 2020, International Gemological Institute

FD - 10 20



THIS DOCUMENT WAS PRODUCED WITH THE FOLLOWING SECURITY MEASURES: SPECIAL DOCUMENT PAPER, INK SCREENS, WATERMARK BACKGROUND DESIGNS, HOLOGRAM AND OTHER SECURITY FEATURES NOT LISTED AND DO EXCEED DOCUMENT SECURITY INDUSTRY GUIDELINES.