



INTERNATIONAL GEMOLOGICAL INSTITUTE

DIAMOND REPORT

ELECTRONIC COPY

April 25, 2022
IGI Report Number 516280391
Description NATURAL DIAMOND
Shape and Cutting Style ROUND BRILLIANT
Measurements 5.66 - 5.68 x 3.42 mm

GRADING RESULTS

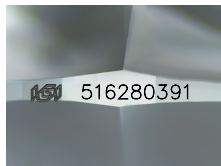
Carat Weight 0.66 CARAT
Color Grade J
Clarity Grade VS 1
Cut Grade EXCELLENT

ADDITIONAL GRADING INFORMATION

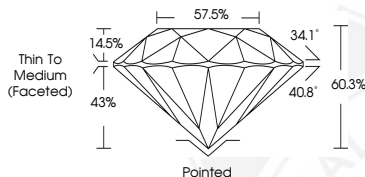
Polish EXCELLENT
Symmetry EXCELLENT
Fluorescence STRONG
Identification Features PINPOINT, CRYSTAL
Inscription(s) IGI 516280391
Comments: IDEAL CUT ROUND BRILLIANT



516280391



Sample Image Used



COLOR

D - F	G - J	K - M	N - R	S - Z	FANCY
Colorless	Near Colorless	Slightly Tinted	Very Light Color	Light Color	

CLARITY

IF	VVS ¹⁻²	VS ¹⁻²	SI ¹⁻²	I ¹⁻²
Internally Flawless	Very Very Slightly Included	Very Slightly Included	Slightly Included	Included



April 25, 2022
IGI Report Number 516280391
NATURAL DIAMOND
ROUND BRILLIANT
5.66 - 5.68 x 3.42 mm
Carat Weight 0.66 CARAT
Color Grade J
Clarity Grade VS 1
Cut Grade EXCELLENT
Symmetry EXCELLENT
Fluorescence STRONG
Inscription(s) IGI 516280391
Comments: IDEAL CUT ROUND BRILLIANT



April 25, 2022
IGI Report Number 516280391
NATURAL DIAMOND
ROUND BRILLIANT
5.66 - 5.68 x 3.42 mm
Carat Weight 0.66 CARAT
Color Grade J
Clarity Grade VS 1
Cut Grade EXCELLENT
Polish EXCELLENT
Symmetry EXCELLENT
Fluorescence STRONG
Inscription(s) IGI 516280391
Comments: IDEAL CUT ROUND BRILLIANT

