



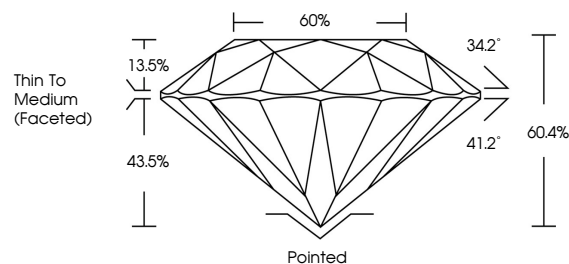
519236648

GRADING RESULTS

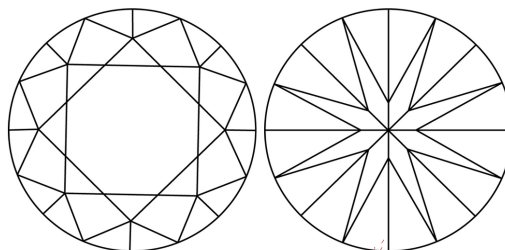
Carat Weight	1.02 CARAT
Color Grade	J
Clarity Grade	VVS 1
Cut Grade	EXCELLENT

ADDITIONAL GRADING INFORMATION

Polish	EXCELLENT
Symmetry	EXCELLENT
Fluorescence	VERY SLIGHT
Inscription(s)	IGI 519236648

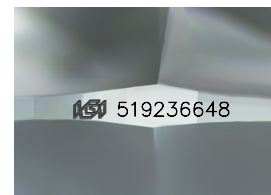


CLARITY CHARACTERISTICS



KEY TO SYMBOLS

Red symbols indicate internal characteristics.
Green symbols indicate external characteristics.



Sample Image Used

COLOR

D - F	G - J	K - M	N - R	S - Z	FANCY
Colorless	Near Colorless	Slightly Tinted	Very Light Color	Light Color	

CLARITY

IF	VVS ¹⁻²	VS ¹⁻²	SI ¹⁻²	I ¹⁻³
Internally Flawless	Very Very Slightly Included	Very Slightly Included	Slightly Included	Included



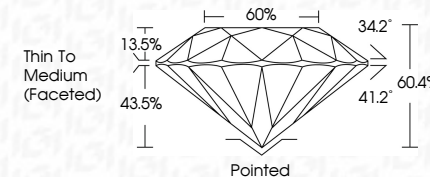
DIAMOND REPORT



April 12, 2022	
IGI Report Number	519236648
Description	NATURAL DIAMOND
Shape and Cutting Style	ROUND BRILLIANT
Measurements	6.53 - 6.58 x 3.95 mm

GRADING RESULTS

Carat Weight	1.02 CARAT
Color Grade	J
Clarity Grade	VVS 1
Cut Grade	EXCELLENT



ADDITIONAL GRADING INFORMATION

Polish	EXCELLENT
Symmetry	EXCELLENT
Fluorescence	VERY SLIGHT
Inscription(s)	IGI 519236648



April 12, 2022	GI Report No.51923648	
NATURAL DIAMOND		
ROUND BRILLIANT		
5.53 x .658 x 3.95 mm		
Carat Weight	1.02 CARAT	
Color Grade	J	
Clarity Grade	VVS1	
Cut Grade	EXCELLENT	
Depth	60.0%	
Table	60%	
Girdle	Thin To Medium (faceted)	
Culet	Pointed	
Polish	EXCELLENT	
Symmetry	EXCELLENT	
Fluorescence	VERY SLIGHT	
Measurements (mm)	IGI #1923648	