



INTERNATIONAL GEMOLOGICAL INSTITUTE

DIAMOND REPORT

ELECTRONIC COPY

April 25, 2022
IGI Report Number 519236665
Description NATURAL DIAMOND
Shape and Cutting Style ROUND BRILLIANT
Measurements 5.23 - 5.27 x 3.23 mm

GRADING RESULTS

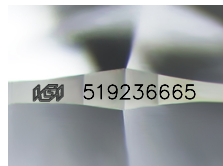
Carat Weight 0.55 CARAT
Color Grade M
Clarity Grade VVS 2
Cut Grade EXCELLENT

ADDITIONAL GRADING INFORMATION

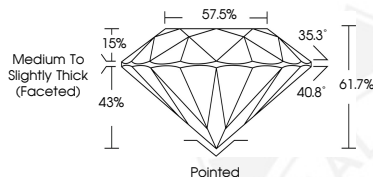
Polish EXCELLENT
Symmetry EXCELLENT
Fluorescence SLIGHT
Identification Features CLOUD
Inscription(s) IGI 519236665
Comments: IDEAL CUT ROUND BRILLIANT



519236665



Sample Image Used



COLOR

| D - F | G - J | K - M | N - R | S - Z | FANCY |
|-----------|----------------|-----------------|------------------|-------------|-------|
| Colorless | Near Colorless | Slightly Tinted | Very Light Color | Light Color | |

CLARITY

| IF | VVS ¹⁻² | VS ¹⁻² | SI ¹⁻² | I ¹⁻² |
|---------------------|-----------------------------|------------------------|-------------------|------------------|
| Internally Flawless | Very Very Slightly Included | Very Slightly Included | Slightly Included | Included |



April 25, 2022
IGI Report Number 519236665
NATURAL DIAMOND
ROUND BRILLIANT
5.23 - 5.27 x 3.23 mm
Carat Weight 0.55 CARAT
Color Grade M
Clarity Grade VVS 2
Cut Grade EXCELLENT
Polish EXCELLENT
Symmetry EXCELLENT
Fluorescence SLIGHT
Inscription(s) IGI 519236665
Comments: IDEAL CUT ROUND BRILLIANT



April 25, 2022
IGI Report Number 519236665
NATURAL DIAMOND
ROUND BRILLIANT
5.23 - 5.27 x 3.23 mm
Carat Weight 0.55 CARAT
Color Grade M
Clarity Grade VVS 2
Cut Grade EXCELLENT
Polish EXCELLENT
Symmetry EXCELLENT
Fluorescence SLIGHT
Inscription(s) IGI 519236665
Comments: IDEAL CUT ROUND BRILLIANT

