



INTERNATIONAL GEMOLOGICAL INSTITUTE

DIAMOND REPORT

ELECTRONIC COPY

May 11, 2022
IGI Report Number 519236690
Description NATURAL DIAMOND
Shape and Cutting Style ROUND BRILLIANT
Measurements 5.22 - 5.25 x 3.24 mm

GRADING RESULTS

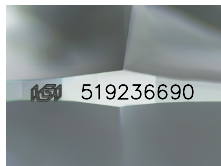
Carat Weight 0.54 CARAT
Color Grade K
Clarity Grade VS 2
Cut Grade EXCELLENT

ADDITIONAL GRADING INFORMATION

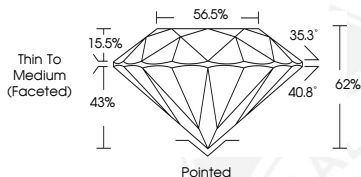
Polish EXCELLENT
Symmetry EXCELLENT
Fluorescence NONE
Identification Features CLOUD
Inscription(s) IGI 519236690
Comments: IDEAL CUT ROUND BRILLIANT



519236690



Sample Image Used



COLOR

D - F	G - J	K - M	N - R	S - Z	FANCY
Colorless	Near Colorless	Slightly Tinted	Very Light Color	Light Color	

CLARITY

IF	VVS ¹⁻²	VS ¹⁻²	SI ¹⁻²	I ¹⁻²
Internally Flawless	Very Very Slightly Included	Very Slightly Included	Slightly Included	Included



May 11, 2022
IGI Report Number 519236690
NATURAL DIAMOND
ROUND BRILLIANT
5.22 - 5.25 x 3.24 mm
Carat Weight 0.54 CARAT
Color Grade K
Clarity Grade VS 2
Cut Grade EXCELLENT
Symmetry EXCELLENT
Fluorescence NONE
Inscription(s) IGI 519236690
Comments: IDEAL CUT ROUND BRILLIANT



May 11, 2022
IGI Report Number 519236690
NATURAL DIAMOND
ROUND BRILLIANT
5.22 - 5.25 x 3.24 mm
Carat Weight 0.54 CARAT
Color Grade K
Clarity Grade VS 2
Cut Grade EXCELLENT
Polish EXCELLENT
Symmetry EXCELLENT
Fluorescence NONE
Inscription(s) IGI 519236690
Comments: IDEAL CUT ROUND BRILLIANT

