



# INTERNATIONAL GEMOLOGICAL INSTITUTE

## DIAMOND REPORT

**ELECTRONIC COPY**

May 25, 2022  
IGI Report Number 520203489  
Description NATURAL DIAMOND  
Shape and Cutting Style ROUND BRILLIANT  
Measurements 4.96 - 4.97 x 3.22 mm

### GRADING RESULTS

Carat Weight 0.51 CARAT  
Color Grade D  
Clarity Grade VS 2  
Cut Grade VERY GOOD

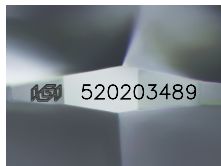
### ADDITIONAL GRADING INFORMATION

Polish EXCELLENT  
Symmetry EXCELLENT  
Fluorescence VERY SLIGHT

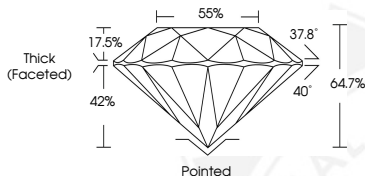
Identification Features CRYSTAL  
Inscription(s) IGI 520203489



520203489



Sample Image Used



### COLOR

D - F	G - J	K - M	N - R	S - Z	FANCY
Colorless	Near Colorless	Slightly Tinted	Very Light Color	Light Color	

### CLARITY

IF	VVS <sup>1-2</sup>	VS <sup>1-2</sup>	SI <sup>1-2</sup>	I <sup>1-2</sup>
Internally Flawless	Very Very Slightly Included	Very Slightly Included	Slightly Included	Included



May 25, 2022  
IGI Report Number 520203489  
NATURAL DIAMOND  
ROUND BRILLIANT  
4.96 - 4.97 x 3.22 mm  
Carat Weight 0.51 CARAT  
Color Grade D  
Clarity Grade VS 2  
Cut Grade VERY GOOD  
Polish EXCELLENT  
Symmetry EXCELLENT  
Fluorescence VERY SLIGHT  
Inscription(s) IGI 520203489



May 25, 2022  
IGI Report Number 520203489  
NATURAL DIAMOND  
ROUND BRILLIANT  
4.96 - 4.97 x 3.22 mm  
Carat Weight 0.51 CARAT  
Color Grade D  
Clarity Grade VS 2  
Cut Grade VERY GOOD  
Polish EXCELLENT  
Symmetry EXCELLENT  
Fluorescence VERY SLIGHT  
Inscription(s) IGI 520203489

