



INTERNATIONAL GEMOLOGICAL INSTITUTE

DIAMOND REPORT

ELECTRONIC COPY

June 17, 2022
IGI Report Number 528212206
Description NATURAL DIAMOND
Shape and Cutting Style ROUND BRILLIANT
Measurements 3.71 - 3.74 x 2.29 mm

GRADING RESULTS

Carat Weight 0.194 CARAT
Color Grade E
Clarity Grade VS 2
Cut Grade EXCELLENT

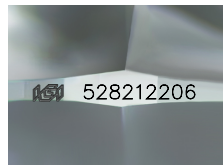
ADDITIONAL GRADING INFORMATION

Polish EXCELLENT
Symmetry EXCELLENT
Fluorescence VERY SLIGHT

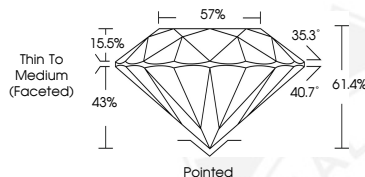
Identification Features CLOUD, CRYSTAL
Inscription(s) IGI 528212206
Comments: IDEAL CUT ROUND BRILLIANT



528212206



Sample Image Used



COLOR

D - F	G - J	K - M	N - R	S - Z	FANCY
Colorless	Near Colorless	Slightly Tinted	Very Light Color	Light Color	

CLARITY

IF	VVS ¹⁻²	VS ¹⁻²	SI ¹⁻²	I ¹⁻²
Internally Flawless	Very Very Slightly Included	Very Slightly Included	Slightly Included	Included



June 17, 2022
IGI Report Number 528212206
NATURAL DIAMOND
ROUND BRILLIANT
3.71 - 3.74 x 2.29 mm
Carat Weight 0.194 CARAT
Color Grade E
Clarity Grade VS 2
Cut Grade EXCELLENT
Polish EXCELLENT
Symmetry EXCELLENT
Fluorescence VERY SLIGHT
Inscription(s) IGI 528212206
Comments: IDEAL CUT ROUND BRILLIANT



June 17, 2022
IGI Report Number 528212206
NATURAL DIAMOND
ROUND BRILLIANT
3.71 - 3.74 x 2.29 mm
Carat Weight 0.194 CARAT
Color Grade E
Clarity Grade VS 2
Cut Grade EXCELLENT
Polish EXCELLENT
Symmetry EXCELLENT
Fluorescence VERY SLIGHT
Inscription(s) IGI 528212206
Comments: IDEAL CUT ROUND BRILLIANT

