



INTERNATIONAL GEMOLOGICAL INSTITUTE

DIAMOND REPORT

ELECTRONIC COPY

June 8, 2022
IGI Report Number 528212318
Description NATURAL DIAMOND
Shape and Cutting Style ROUND BRILLIANT
Measurements 3.63 - 3.65 x 2.26 mm

GRADING RESULTS

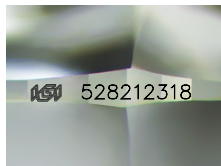
Carat Weight 0.184 CARAT
Color Grade E
Clarity Grade VS 1
Cut Grade EXCELLENT

ADDITIONAL GRADING INFORMATION

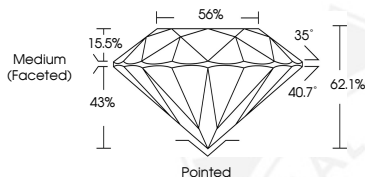
Polish EXCELLENT
Symmetry EXCELLENT
Fluorescence NONE
Identification Features CRYSTAL
Inscription(s) IGI 528212318
Comments: IDEAL CUT ROUND BRILLIANT



528212318



Sample Image Used



COLOR

D - F	G - J	K - M	N - R	S - Z	FANCY
Colorless	Near Colorless	Slightly Tinted	Very Light Color	Light Color	

CLARITY

IF	VVS ¹⁻²	VS ¹⁻²	SI ¹⁻²	I ¹⁻²
Internally Flawless	Very Very Slightly Included	Very Slightly Included	Slightly Included	Included



June 8, 2022
IGI Report Number 528212318
NATURAL DIAMOND
ROUND BRILLIANT
3.63 - 3.65 x 2.26 mm
Carat Weight 0.184 CARAT
Color Grade E
Clarity Grade VS 1
Cut Grade EXCELLENT
Polish EXCELLENT
Symmetry EXCELLENT
Fluorescence NONE
Inscription(s) IGI 528212318
Comments: IDEAL CUT ROUND BRILLIANT



June 8, 2022
IGI Report Number 528212318
NATURAL DIAMOND
ROUND BRILLIANT
3.63 - 3.65 x 2.26 mm
Carat Weight 0.184 CARAT
Color Grade E
Clarity Grade VS 1
Cut Grade EXCELLENT
Polish EXCELLENT
Symmetry EXCELLENT
Fluorescence NONE
Inscription(s) IGI 528212318
Comments: IDEAL CUT ROUND BRILLIANT

