



# INTERNATIONAL GEMOLOGICAL INSTITUTE

## DIAMOND REPORT

**ELECTRONIC COPY**

June 27, 2022  
IGI Report Number 528212338  
Description NATURAL DIAMOND  
Shape and Cutting Style ROUND BRILLIANT  
Measurements 3.66 - 3.69 x 2.28 mm

### GRADING RESULTS

Carat Weight 0.19 CARAT  
Color Grade D  
Clarity Grade VS 1  
Cut Grade EXCELLENT

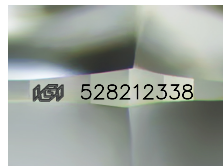
### ADDITIONAL GRADING INFORMATION

Polish EXCELLENT  
Symmetry EXCELLENT  
Fluorescence NONE

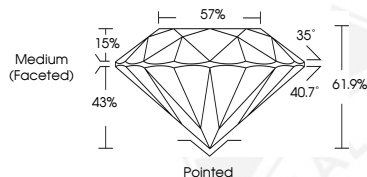
Identification Features CLOUD, CRYSTAL  
Inscription(s) IGI 528212338  
Comments: IDEAL CUT ROUND BRILLIANT



528212338



Sample Image Used



### COLOR

| D - F     | G - J          | K - M           | N - R            | S - Z       | FANCY |
|-----------|----------------|-----------------|------------------|-------------|-------|
| Colorless | Near Colorless | Slightly Tinted | Very Light Color | Light Color |       |

### CLARITY

| IF                  | VVS <sup>1-2</sup>          | VS <sup>1-2</sup>      | SI <sup>1-2</sup> | I <sup>1-2</sup> |
|---------------------|-----------------------------|------------------------|-------------------|------------------|
| Internally Flawless | Very Very Slightly Included | Very Slightly Included | Slightly Included | Included         |



June 27, 2022  
IGI Report Number 528212338  
NATURAL DIAMOND  
ROUND BRILLIANT  
3.66 - 3.69 x 2.28 mm  
Carat Weight 0.19 CARAT  
Color Grade D  
Clarity Grade VS 1  
Cut Grade EXCELLENT  
Polish EXCELLENT  
Symmetry EXCELLENT  
Fluorescence NONE  
Inscription(s) IGI 528212338  
Comments: IDEAL CUT ROUND BRILLIANT



June 27, 2022  
IGI Report Number 528212338  
NATURAL DIAMOND  
ROUND BRILLIANT  
3.66 - 3.69 x 2.28 mm  
Carat Weight 0.19 CARAT  
Color Grade D  
Clarity Grade VS 1  
Cut Grade EXCELLENT  
Polish EXCELLENT  
Symmetry EXCELLENT  
Fluorescence NONE  
Inscription(s) IGI 528212338  
Comments: IDEAL CUT ROUND BRILLIANT

