



INTERNATIONAL GEMOLOGICAL INSTITUTE

DIAMOND REPORT

ELECTRONIC COPY

June 27, 2022
IGI Report Number 528212496
Description NATURAL DIAMOND
Shape and Cutting Style ROUND BRILLIANT
Measurements 3.90 - 3.92 x 2.42 mm

GRADING RESULTS

Carat Weight 0.227 CARAT
Color Grade D
Clarity Grade VS 1
Cut Grade EXCELLENT

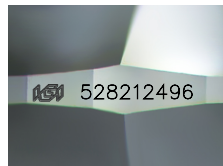
ADDITIONAL GRADING INFORMATION

Polish EXCELLENT
Symmetry EXCELLENT
Fluorescence NONE

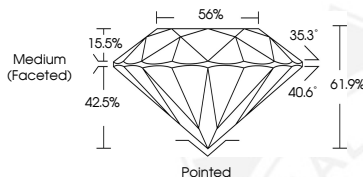
Identification Features FEATHER, PINPOINT
Inscription(s) IGI 528212496
Comments: IDEAL CUT ROUND BRILLIANT



528212496



Sample Image Used



COLOR

| D - F | G - J | K - M | N - R | S - Z | FANCY |
|-----------|----------------|-----------------|------------------|-------------|-------|
| Colorless | Near Colorless | Slightly Tinted | Very Light Color | Light Color | |

CLARITY

| IF | VVS ¹⁻² | VS ¹⁻² | SI ¹⁻² | I ¹⁻² |
|---------------------|-----------------------------|------------------------|-------------------|------------------|
| Internally Flawless | Very Very Slightly Included | Very Slightly Included | Slightly Included | Included |

© IGI 2020, International Gemological Institute

FD - 10 20



June 27, 2022
IGI Report Number 528212496
NATURAL DIAMOND
ROUND BRILLIANT
3.90 - 3.92 x 2.42 mm
Carat Weight 0.227 CARAT
Color Grade D
Clarity Grade VS 1
Cut Grade EXCELLENT
Polish EXCELLENT
Symmetry EXCELLENT
Fluorescence NONE
Inscription(s) IGI 528212496
Comments: IDEAL CUT ROUND BRILLIANT



June 27, 2022
IGI Report Number 528212496
NATURAL DIAMOND
ROUND BRILLIANT
3.90 - 3.92 x 2.42 mm
Carat Weight 0.227 CARAT
Color Grade D
Clarity Grade VS 1
Cut Grade EXCELLENT
Polish EXCELLENT
Symmetry EXCELLENT
Fluorescence NONE
Inscription(s) IGI 528212496
Comments: IDEAL CUT ROUND BRILLIANT



THIS DOCUMENT WAS PRODUCED WITH THE FOLLOWING SECURITY MEASURES: SPECIAL DOCUMENT PAPER, INK SCREENS, WATERMARK, BACKGROUND DESIGNS, HOLOGRAM AND OTHER SECURITY FEATURES NOT LISTED AND DO EXCEED DOCUMENT SECURITY INDUSTRY GUIDELINES.