



# INTERNATIONAL GEMOLOGICAL INSTITUTE

## DIAMOND REPORT

**ELECTRONIC COPY**

June 17, 2022  
IGI Report Number 528212516  
Description NATURAL DIAMOND  
Shape and Cutting Style ROUND BRILLIANT  
Measurements 3.83 - 3.85 x 2.33 mm

### GRADING RESULTS

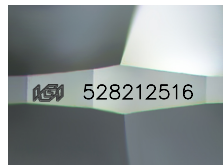
Carat Weight 0.21 CARAT  
Color Grade F  
Clarity Grade INTERNALLY FLAWLESS  
Cut Grade EXCELLENT

### ADDITIONAL GRADING INFORMATION

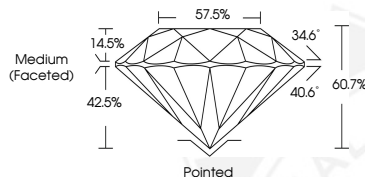
Polish EXCELLENT  
Symmetry EXCELLENT  
Fluorescence NONE  
Inscription(s) IGI 528212516  
Comments: IDEAL CUT ROUND BRILLIANT



528212516



Sample Image Used



### COLOR

D - F	G - J	K - M	N - R	S - Z	FANCY
Colorless	Near Colorless	Slightly Tinted	Very Light Color	Light Color	

### CLARITY

IF	VVS <sup>1-2</sup>	VS <sup>1-2</sup>	SI <sup>1-2</sup>	I <sup>1-2</sup>
Internally Flawless	Very Very Slightly Included	Very Slightly Included	Slightly Included	Included

© IGI 2020, International Gemological Institute

FD - 10 20



THIS DOCUMENT WAS PRODUCED WITH THE FOLLOWING SECURITY MEASURES: SPECIAL DOCUMENT PAPER, INK SCREENS, WATERMARK, BACKGROUND DESIGNS, HOLOGRAM AND OTHER SECURITY FEATURES NOT LISTED AND DO EXCEED DOCUMENT SECURITY INDUSTRY GUIDELINES.



June 17, 2022  
IGI Report Number 528212516  
NATURAL DIAMOND  
ROUND BRILLIANT  
3.83 - 3.85 x 2.33 mm  
Carat Weight 0.21 CARAT  
Color Grade F  
Clarity Grade INTERNALLY FLAWLESS  
Cut Grade EXCELLENT  
Polish EXCELLENT  
Symmetry EXCELLENT  
Fluorescence NONE  
Inscription(s) IGI 528212516  
Comments: IDEAL CUT ROUND BRILLIANT



June 17, 2022  
IGI Report Number 528212516  
NATURAL DIAMOND  
ROUND BRILLIANT  
3.83 - 3.85 x 2.33 mm  
Carat Weight 0.21 CARAT  
Color Grade F  
Clarity Grade INTERNALLY FLAWLESS  
Cut Grade EXCELLENT  
Polish EXCELLENT  
Symmetry EXCELLENT  
Fluorescence NONE  
Inscription(s) IGI 528212516  
Comments: IDEAL CUT ROUND BRILLIANT