



INTERNATIONAL GEMOLOGICAL INSTITUTE

DIAMOND REPORT

ELECTRONIC COPY

June 8, 2022
IGI Report Number 528212578
Description NATURAL DIAMOND
Shape and Cutting Style ROUND BRILLIANT
Measurements 3.65 - 3.67 x 2.28 mm

GRADING RESULTS

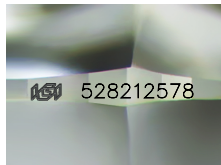
Carat Weight 0.19 CARAT
Color Grade F
Clarity Grade INTERNALLY FLAWLESS
Cut Grade EXCELLENT

ADDITIONAL GRADING INFORMATION

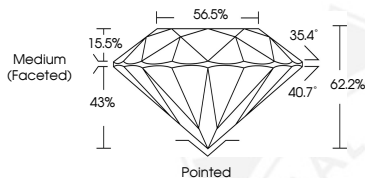
Polish EXCELLENT
Symmetry EXCELLENT
Fluorescence NONE
Inscription(s) IGI 528212578
Comments: IDEAL CUT ROUND BRILLIANT



528212578



Sample Image Used



COLOR

D - F	G - J	K - M	N - R	S - Z	FANCY
Colorless	Near Colorless	Slightly Tinted	Very Light Color	Light Color	

CLARITY

IF	VVS ¹⁻²	VS ¹⁻²	SI ¹⁻²	I ¹⁻²
Internally Flawless	Very Very Slightly Included	Very Slightly Included	Slightly Included	Included

© IGI 2020, International Gemological Institute

FD - 10 20



THIS DOCUMENT WAS PRODUCED WITH THE FOLLOWING SECURITY MEASURES: SPECIAL DOCUMENT PAPER, INK SCREENS, WATERMARK BACKGROUND DESIGNS, HOLOGRAM AND OTHER SECURITY FEATURES NOT LISTED AND DO EXCEED DOCUMENT SECURITY INDUSTRY GUIDELINES.



June 8, 2022
IGI Report Number 528212578
NATURAL DIAMOND
ROUND BRILLIANT
3.65 - 3.67 x 2.28 mm
Carat Weight 0.19 CARAT
Color Grade F
Clarity Grade INTERNALLY FLAWLESS
Cut Grade EXCELLENT
Polish EXCELLENT
Symmetry EXCELLENT
Fluorescence NONE
Inscription(s) IGI 528212578
Comments: IDEAL CUT ROUND BRILLIANT



June 8, 2022
IGI Report Number 528212578
NATURAL DIAMOND
ROUND BRILLIANT
3.65 - 3.67 x 2.28 mm
Carat Weight 0.19 CARAT
Color Grade F
Clarity Grade INTERNALLY FLAWLESS
Cut Grade EXCELLENT
Polish EXCELLENT
Symmetry EXCELLENT
Fluorescence NONE
Inscription(s) IGI 528212578
Comments: IDEAL CUT ROUND BRILLIANT