



INTERNATIONAL GEMOLOGICAL INSTITUTE

DIAMOND REPORT

ELECTRONIC COPY

June 8, 2022
IGI Report Number 528212628
Description NATURAL DIAMOND
Shape and Cutting Style ROUND BRILLIANT
Measurements 3.69 - 3.71 x 2.28 mm

GRADING RESULTS

Carat Weight 0.191 CARAT
Color Grade D
Clarity Grade VS 1
Cut Grade EXCELLENT

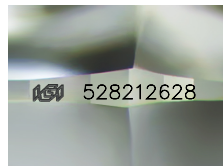
ADDITIONAL GRADING INFORMATION

Polish EXCELLENT
Symmetry EXCELLENT
Fluorescence VERY SLIGHT

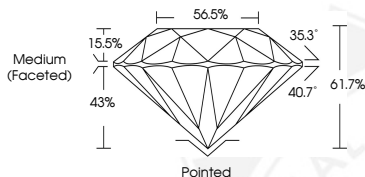
Identification Features CLOUD
Inscription(s) IGI 528212628
Comments: IDEAL CUT ROUND BRILLIANT



528212628



Sample Image Used



COLOR

D - F	G - J	K - M	N - R	S - Z	FANCY
Colorless	Near Colorless	Slightly Tinted	Very Light Color	Light Color	

CLARITY

IF	VVS ¹⁻²	VS ¹⁻²	SI ¹⁻²	I ¹⁻²
Internally Flawless	Very Very Slightly Included	Very Slightly Included	Slightly Included	Included



June 8, 2022
IGI Report Number 528212628
NATURAL DIAMOND
ROUND BRILLIANT
3.69 - 3.71 x 2.28 mm
Carat Weight 0.191 CARAT
Color Grade D
Clarity Grade VS 1
Cut Grade EXCELLENT
Polish EXCELLENT
Symmetry EXCELLENT
Fluorescence VERY SLIGHT
Inscription(s) IGI 528212628
Comments: IDEAL CUT ROUND BRILLIANT



June 8, 2022
IGI Report Number 528212628
NATURAL DIAMOND
ROUND BRILLIANT
3.69 - 3.71 x 2.28 mm
Carat Weight 0.191 CARAT
Color Grade D
Clarity Grade VS 1
Cut Grade EXCELLENT
Polish EXCELLENT
Symmetry EXCELLENT
Fluorescence VERY SLIGHT
Inscription(s) IGI 528212628
Comments: IDEAL CUT ROUND BRILLIANT

