



INTERNATIONAL GEMOLOGICAL INSTITUTE

DIAMOND REPORT

ELECTRONIC COPY

June 24, 2022
IGI Report Number 528212796
Description NATURAL DIAMOND
Shape and Cutting Style ROUND BRILLIANT
Measurements 3.65 - 3.69 x 2.27 mm

GRADING RESULTS

Carat Weight 0.19 CARAT
Color Grade D
Clarity Grade VS 2
Cut Grade EXCELLENT

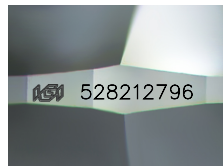
ADDITIONAL GRADING INFORMATION

Polish EXCELLENT
Symmetry EXCELLENT
Fluorescence NONE

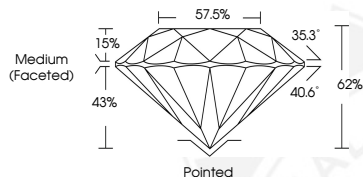
Identification Features CLOUD, CRYSTAL
Inscription(s) IGI 528212796
Comments: IDEAL CUT ROUND BRILLIANT



528212796



Sample Image Used



COLOR

| D - F | G - J | K - M | N - R | S - Z | FANCY |
|-----------|----------------|-----------------|------------------|-------------|-------|
| Colorless | Near Colorless | Slightly Tinted | Very Light Color | Light Color | |

CLARITY

| IF | VVS ¹⁻² | VS ¹⁻² | SI ¹⁻² | I ¹⁻² |
|---------------------|-----------------------------|------------------------|-------------------|------------------|
| Internally Flawless | Very Very Slightly Included | Very Slightly Included | Slightly Included | Included |



June 24, 2022
IGI Report Number 528212796
NATURAL DIAMOND
ROUND BRILLIANT
3.65 - 3.69 x 2.27 mm
Carat Weight 0.19 CARAT
Color Grade D
Clarity Grade VS 2
Cut Grade EXCELLENT
Polish EXCELLENT
Symmetry EXCELLENT
Fluorescence NONE
Inscription(s) IGI 528212796
Comments: IDEAL CUT ROUND BRILLIANT



June 24, 2022
IGI Report Number 528212796
NATURAL DIAMOND
ROUND BRILLIANT
3.65 - 3.69 x 2.27 mm
Carat Weight 0.19 CARAT
Color Grade D
Clarity Grade VS 2
Cut Grade EXCELLENT
Polish EXCELLENT
Symmetry EXCELLENT
Fluorescence NONE
Inscription(s) IGI 528212796
Comments: IDEAL CUT ROUND BRILLIANT

