



INTERNATIONAL GEMOLOGICAL INSTITUTE

DIAMOND REPORT

ELECTRONIC COPY

June 8, 2022
IGI Report Number 528213034
Description NATURAL DIAMOND
Shape and Cutting Style ROUND BRILLIANT
Measurements 3.85 - 3.89 x 2.39 mm

GRADING RESULTS

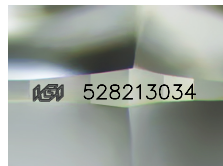
Carat Weight 0.221 CARAT
Color Grade F
Clarity Grade INTERNALLY FLAWLESS
Cut Grade EXCELLENT

ADDITIONAL GRADING INFORMATION

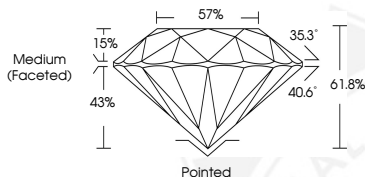
Polish EXCELLENT
Symmetry EXCELLENT
Fluorescence NONE
Inscription(s) IGI 528213034
Comments: IDEAL CUT ROUND BRILLIANT



528213034



Sample Image Used



COLOR

| D - F | G - J | K - M | N - R | S - Z | FANCY |
|-----------|----------------|-----------------|------------------|-------------|-------|
| Colorless | Near Colorless | Slightly Tinted | Very Light Color | Light Color | |

CLARITY

| IF | VVS ¹⁻² | VS ¹⁻² | SI ¹⁻² | I ¹⁻² |
|---------------------|-----------------------------|------------------------|-------------------|------------------|
| Internally Flawless | Very Very Slightly Included | Very Slightly Included | Slightly Included | Included |



June 8, 2022
IGI Report Number 528213034
NATURAL DIAMOND
ROUND BRILLIANT
3.85 - 3.89 x 2.39 mm
Carat Weight 0.221 CARAT
Color Grade F
Clarity Grade INTERNALLY FLAWLESS
Cut Grade EXCELLENT
Polish EXCELLENT
Symmetry EXCELLENT
Fluorescence NONE
Inscription(s) IGI 528213034
Comments: IDEAL CUT ROUND BRILLIANT



June 8, 2022
IGI Report Number 528213034
NATURAL DIAMOND
ROUND BRILLIANT
3.85 - 3.89 x 2.39 mm
Carat Weight 0.221 CARAT
Color Grade F
Clarity Grade INTERNALLY FLAWLESS
Cut Grade EXCELLENT
Polish EXCELLENT
Symmetry EXCELLENT
Fluorescence NONE
Inscription(s) IGI 528213034
Comments: IDEAL CUT ROUND BRILLIANT

