



DIAMOND REPORT

ELECTRONIC COPY

June 17, 2022	
IGI Report Number	530232244
Description	NATURAL DIAMOND
Shape and Cutting Style	ROUND BRILLIANT
Measurements	3.63 - 3.65 x 2.24 mm

GRADING RESULTS

Carat Weight	0.181 CARAT
Color Grade	D
Clarity Grade	VS 1
Cut Grade	EXCELLENT

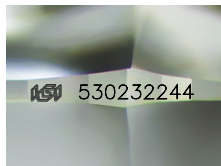
ADDITIONAL GRADING INFORMATION

Polish	EXCELLENT
Symmetry	EXCELLENT
Fluorescence	NONE

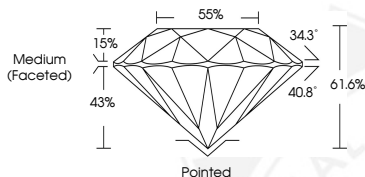
Identification Features	CRYSTAL
Inscription(s)	IGI 530232244
Comments: IDEAL CUT ROUND BRILLIANT	



530232244



Sample Image Used



COLOR

D - F	G - J	K - M	N - R	S - Z	FANCY
Colorless	Near Colorless	Slightly Tinted	Very Light Color	Light Color	

CLARITY

IF	VVS ¹⁻²	VS ¹⁻²	SI ¹⁻²	I ¹⁻²
Internally Flawless	Very Very Slightly Included	Very Slightly Included	Slightly Included	Included

© IGI 2020. International Gemological Institute

FD - 10 20



June 17, 2022
 IGI Report Number 530232244
 NATURAL DIAMOND
 ROUND BRILLIANT
 3.63 - 3.65 x 2.24 mm
 Carat Weight 0.181 CARAT
 Color Grade D
 Clarity Grade VS 1
 Cut Grade EXCELLENT
 Polish EXCELLENT
 Symmetry EXCELLENT
 Fluorescence NONE
 Inscription(s) IGI 530232244
 Comments: IDEAL CUT ROUND
 BRILLIANT



June 17, 2022	
IGI Report Number	530232244
NATURAL DIAMOND	
ROUND BRILLIANT	
3.63 - 3.65 x 2.24 mm	
Carat Weight	0.181 CARAT
Color Grade	D
Clarity Grade	VS 1
Cut Grade	EXCELLENT
Polish	EXCELLENT
Symmetry	EXCELLENT
Fluorescence	NONE
Inscription(s)	IGI 530232244
Comments: IDEAL CUT ROUND BRILLIANT	



THIS DOCUMENT WAS PRODUCED WITH THE FOLLOWING SECURITY MEASURES: SPECIAL DOCUMENT PAPER, INK SCREENS, WATERMARK BACKGROUND DESIGNS, HOLOGRAM AND OTHER SECURITY FEATURES NOT LISTED AND DO EXCEED DOCUMENT SECURITY INDUSTRY GUIDELINES